



PRODUCT CATALOG

LED Commercial Lighting Fixtures

TABLE OF CONTENTS

3 - 19	LED INDOOR FIXTURES
20 - 25	LED OUTDOOR FIXTURES
26 - 28	ADVANCED LIGHTING CONTROLS

EarthTronics is an LED lighting product manufacturer and supplier dedicated to developing innovative energy-efficient lighting products that provide a positive economic and environmental impact for our customers. EarthTronics lighting products are focused on commercial and institutional customers for use in office, warehousing, retail, education, long term care, hospitality, and manufacturing.

Since 2007, we have been at the cutting edge of LED products. Our home resides in Norton Shores, MI, but we can be found anywhere you need a little light.

Where Efficiency Meets Innovation



Linear Highbay

This fixture's lightweight and compact design is great for warehouse and manufacturing applications.



VOLTAGE
120/277V

WATTAGE
92W up to 270W

LUMENS
13800 up to 40500

COLORS
5000K

FEATURES

- + Lightweight, compact design
- + 6kV ANSI surge protection standard
- + PMMA lens
- + Durable steel housing
- + Up to 50° C true ambient temperature
- + Driver standard with 0-10V dimming (prewired)
- + Suitable for damp locations
- + Dimmable
- + 100,000 hrs rated life L70
- + VHook + chain included
- + EarthConnect available for 120V and 277V application

COMPATIBLE

with EarthConnect®
Network Lighting Controls
120V and 277V ONLY



Order Code	Model #	Length	Watts	CCT	Lumens
11685	HBL9250WH1	1.3ft	92W	5000K	13800LM
11687	HBL13550WH1	1.3ft	135W	5000K	20250LM
11689	HBL18550WH1	1.9ft	185W	5000K	27750LM
11691	HBL27050WH1	2.6ft	270W	5000K	40500LM
11463A	LHBS-4FT-U-P-300-850	4ft	210W, 250W, 300W	5000K	32550LM, 38760LM, 46500LM

Optional Accessories

Pendant Mount and Surface Mount Kits, Wire Guards, PIR Sensor, Advanced Controls, Emergency Back-Up Driver, and 6ft Cord are available.

Linear Highbay - Color & Watt Selectable

This fixture's lightweight and compact design is great for warehouse and manufacturing applications.



VOLTAGE
120/277V

WATTAGE
100W up to 270W

LUMENS
15000 up to 40500

COLORS
4000K, 5000K

FEATURES

- + 3-Stage brightness adjustable
- + 2 CCT color selectable
- + Lightweight, compact design
- + 6kV ANSI surge protection standard
- + PMMA lens
- + Durable steel housing
- + Up to 50° C true ambient temperature
- + Driver standard with 0-10V dimming (prewired)
- + Suitable for damp locations
- + 100,000 hrs rated life L70
- + Hanging hardware included
- + 12VDC easy twist audio jack receptacle compatible with EarthConnect and other controls

COMPATIBLE
with EarthConnect®
Network Lighting Controls



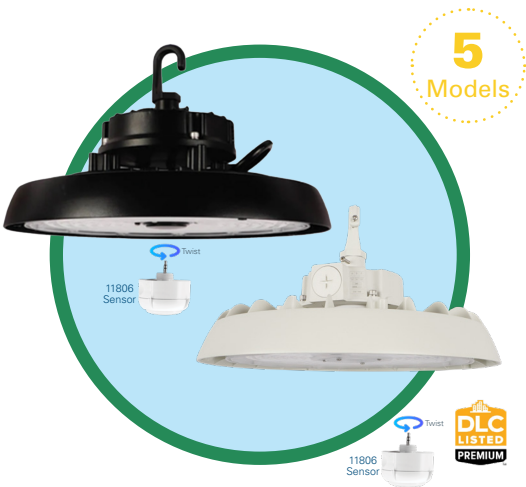
Order Code	Model #	Length	Watts Selectable	CCT Selectable	Lumens
11858	HBLWS115CCTWH5	1.3ft	78W, 92W, or 115W	4000K 5000K	11700LM 13800LM 11700LM
11855	HBLWS135CCTWH1	1.3ft	100W, 115W, or 135W	4000K 5000K	15000LM 17250LM 20250LM
11856	HBLWS185CCTWH1	1.9ft	135W, 155W, or 185W	4000K 5000K	20250LM 23250LM 27750LM
11857	HBLWS270CCTWH1	2.6ft	200W, 230W, or 270W	4000K 5000K	30000LM 34500LM 40500LM

Optional Accessories

Pendant Mount and Surface Mount Kits, Wire Guards, PIR Sensor, Emergency Back-Up Driver, 6ft Cord, Advanced Controls are available.

UFO Highbay - Color & Watt Selectable

The UFO's simple and efficient design is great for warehouse and manufacturing applications.



5

Models

VOLTAGE

120/277V

WATTAGE SELECTABLE

50W up to 300W

LUMENS

16000 up to 48000

COLOR SELECTABLE

4000K, 5000K

COMPATIBLE
with EarthConnect®
Network Lighting Controls

Earth
Connect

FEATURES

- + Simple design
- + 2 CCT color selectable
- + 3-Stage brightness adjustment
- + ETL sanitation listed, Conforms to NSF Std. 2
- + Ship with standard 6' 18/3 SJT cord
- + Corrosion resistance die-cast aluminum alloy
- + IP65 wet location rated
- + Polycarbonate lens is IK08 rated
- + 100,000 hrs rated life L80
- + 6kV surge protector
- + 12VDC easy twist audio jack receptacle compatible with EarthConnect and other controls

Order Code	Model #	Watts Selectable	CCT Selectable	Lumens
11887	HBU150WSCCTB1S	100W, 125W, or 150W	4000K 5000K	16000 20000 24000
11888	HBU240WSCCTB1S	150W, 200W, or 240W	4000K 5000K	24000 32000 38400
11890 *White Finish	HBU240WSCCTW1S	150W, 200W, or 240W	4000K 5000K	24000 32000 38400
11889	HBU300WSCCTB1S	200W, 240W, or 300W	4000K 5000K	32000 38400 48000
11904 *White Finish	HBU300WSCCTW1S	200W, 240W, or 300W	4000K 5000K	32000 38400 48000

Optional Accessories

Trunnion Mounts, Wire Guards, Reflectors, Remote Control, Emergency Back-up Driver, Microwave Sensor, 480V Step Down Transformer, and Advanced Controls are available.

Washdown Highbay - Watt Selectable

The Washdown Highbay series is rated IP69K and ETL Sanitation Listed for use in food processing and clean room applications.



VOLTAGE
120/277V

WATTAGE SELECTABLE
100W, 150W, 200W

LUMENS
15000, 22500, 30000

COLORS
5000K

FEATURES

- + 3-Stage brightness adjustment
- + 0-10V dimming (prewired)
- + NSF Std. rated (for food safety)
- + IP69K rated for Pressure Washdown
- + 4kV surge protection built in
- + Polycarbonate lens, shatter proof, stronger than glass
- + Suitable for damp locations
- + Durable and corrosion Resistant powder coat finish
- + 100,000 hours rated life L70
- + 12VDC easy twist audio jack receptacle compatible with EarthConnect and other controls

COMPATIBLE
with EarthConnect®
Network Lighting Controls



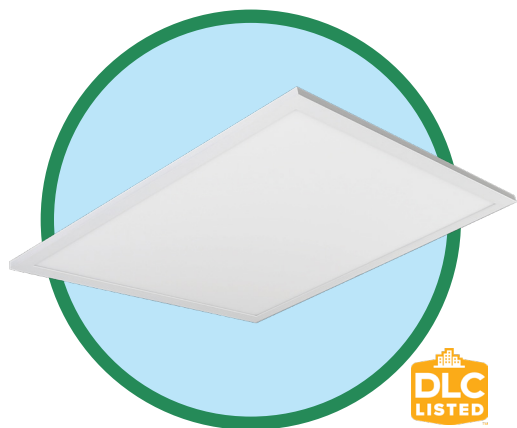
Order Code	Model #	Watts Selectable	CCT	Lumens
11851	HBWWS50WH1	100W, 150W, or 200W	5000K	15000 22500 30000

Optional Accessories

12VDC Microwave Motion Sensor, Sensor Remote Control, Advanced Controls are available.

Back-Light Panel - Color & Watt Selectable

Perfect fit for office buildings, schools, and common areas.



VOLTAGE

120/277V

WATTAGE SELECTABLE

20W up to 45W

LUMENS

2200 up to 5000

COLOR SELECTABLE

3500K, 4000K, 5000K

FEATURES

- + 3-Stage brightness adjustment
- + 3 CCT color selectable
- + Direct illumination provides true color over the life of the product
- + Integral LED lens is constructed from PMMA and provides even illumination across the face of the panel
- + Stamped steel LED housing is part of a rigid fixture design
- + Fixture interior painted white for over 96% reflectivity
- + Contractor friendly junction box for easy installation
- + 0-10V dimming is standard
- + EarthConnect available for 120V/277V application

COMPATIBLE

with EarthConnect®
Network Lighting Controls

120V and 277V ONLY



Order Code	Model #	Watts Selectable	Color Selectable	Lumens
11674 1x4 120/247V	LDFP1X4WSCCTD5	30W, 35W, or 45W	3500K, 4000K, or 5000K	3750 4375 5000
11496 2x2 120-277V	LDFP2X2WSCCTD1	20W, 30W, or 35W	3500K, 4000K, or 5000K	2200 3300 4000
11498 2x4 120-277V	LDFP2X4WSCCTD1	30W, 35W, or 45W	3500K, 4000K, or 5000K	3300 4000 5000

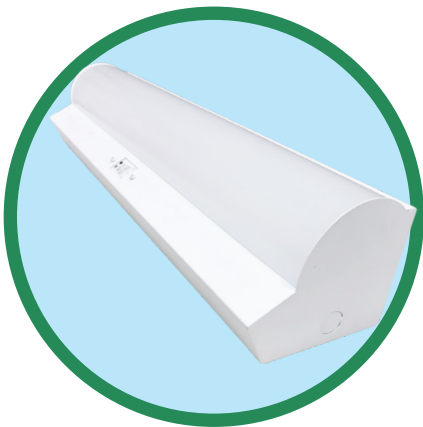
Optional Accessories

Emergency Back-up Driver, Surface mount kits, Dry-wall Kit, and Advanced Controls available

For more information please refer to our specification sheets on www.EarthTronics.com

Stairwell - Color & Watt Selectable

48" long LED Stairwell for indoor applications.



VOLTAGE
120/277V; 347V

WATTAGE SELECTABLE
35W, 45W, 55W

LUMENS
4200, 5400, 6600

COLOR SELECTABLE
3500K, 4000K, 5000K

FEATURES

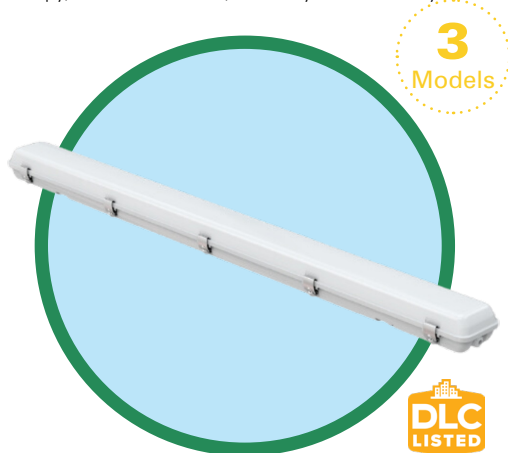
- + 3-Stage birghtness adjustable
- + 3 CCT color selectable
- + Standard 48" long
- + Direct illumination provides true color over the life of the product
- + Suitable for dry and damp locations
- + Wall mounting
- + Durable steel with polycarbonate lens
- + 0-10V dimming is standard
- + 50,000 hrs rated life
- + Microwave sensor and remote control are available

Order Code	Model #	Watts Selectable	CCT Selectable	Lumens
11897	LSW4WS55CCTWH1	35W, 45W, or 55W	3500K, 4000K, or 5000K	4200 5400 6600

Optional Accessories	Emergency Back-up Driver, Microwave Sensor, Sensor Remote Control, and Advanced Controls are available.
----------------------	---

VaporTight - Color & Watt Selectable

This vapor tight fixture is ideal for commercial kitchens, parking garage, walkways, stairwells, under canopy, and where water, humidity and dust may occur.



3

Models

VOLTAGE

120/277V

WATTAGE SELECTABLE

15W up to 90W

LUMENS

1950 up to 11700

COLOR SELECTABLE

3500K, 4000K, 5000K



FEATURES

- + 3-Stage brightness adjustable
- + 3 CCT color selectable
- + Integrated lens and LED module provide easy installation
- + Driver standard with 0-10V dimming (prewired)
- + Fixture is corrosion resistant
- + The polycarbonate housing and lens are sealed to and tested for IP66
- + Dimmable
- + Latches are stainless steel
- + 100,000 hours rated life L70
- + NEMA 4x
- + EarthConnect compatible
- + Microwave sensor and remote control are available

COMPATIBLE

with EarthConnect®
Network Lighting Controls



Order Code	Model #	Length	Watts Selectable	CCT Selectable	Lumens
11844	LVT2WSCCTD1S	2ft	15W, 20W, or 25W	3500K, 4000K, or 5000K	1950LM 2600LM 3250LM
11845	LVT4WSCCTD1S	4ft	34W, 38W, or 45W	3500K, 4000K, or 5000K	4420LM 4940LM 5850LM
11846	LVT8WSCCTD1S	8ft	65W, 75W, or 90W	3500K, 4000K, or 5000K	8450LM 9750LM 11700LM

Optional Accessories

Emergency Back-up Driver, Microwave Occupancy Sensor, Sensor Remote Control, and Advanced Controls are available.

VaporTight Highbay

This vapor tight highbay fixture is ideal for food processing areas, warehouses, and other wet, dusty, and dirty environments.

2
Models



VOLTAGE

120-277V; 347V

WATTAGE SELECTABLE

100W up to 200W

LUMENS

16000 up to 32000

COLOR SELECTABLE

4000K, 5000K

FEATURES

- + 3-Stage brightness adjustable
- + 2 CCT color selectable
- + Driver standard with 0-10V dimming (prewired)
- + NEMA 4x
- + NSF Certified, ETL Sanitation
- + The UL 94 5VA polycarbonate housing and lens are sealed to and tested for IP66
- + Stainless steel latches
- + Daylight harvesting and dim to off functions
- + 100,000 hours rated life L70
- + EarthConnect compatible
- + 47.5" L x 10.5" W

COMPATIBLE

with EarthConnect®
Network Lighting Controls



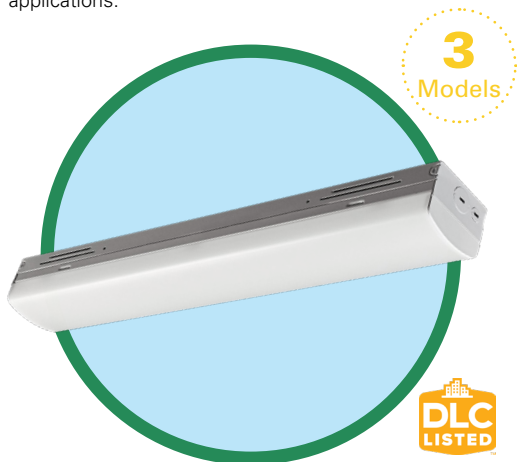
Order Code	Model #	Length	Watts Selectable	CCT Selectable	Lumens
11900	LVTHBWS135CCTD5	4ft	100W, 115W, or 135W	4000K 5000K	16000LM 18400LM 21600LM
11901	LVTHBWS200CCTD5	4ft	155W, 185W, or 200W	4000K 5000K	24800LM 29600LM 32000LM

Optional Accessories

Emergency Back-up Driver, Microwave Sensor, Sensor Remote Control, and Advanced Controls are available.

Strip Light - Color & Watt Selectable

This Strip Light is advanced control ready and is great for general lighting and manufacturing applications.



VOLTAGE
120/277V

WATTAGE SELECTABLE
15W up to 90W

LUMENS
1950 up to 11700

COLOR SELECTABLE
3500K, 4000K, 5000K

FEATURES

- + 3-Stage brightness adjustable
- + 3 CCT color selectable
- + Driver standard with 0-10V dimming (prewired)
- + LED array is integrated in the lens assembly and snap locks to the frame for easy installation
- + Faster surface or row mounting with available connectors kits
- + UL 1598 damp and dry locations
- + Dimming range 10% to 100%
- + 100,000 hours rated life L70
- + 4kV ANSI surge protection included (10kV available)
- + Safety aircraft cables included for easy install

COMPATIBLE
with EarthConnect®
Network Lighting Controls
120V and 277V ONLY



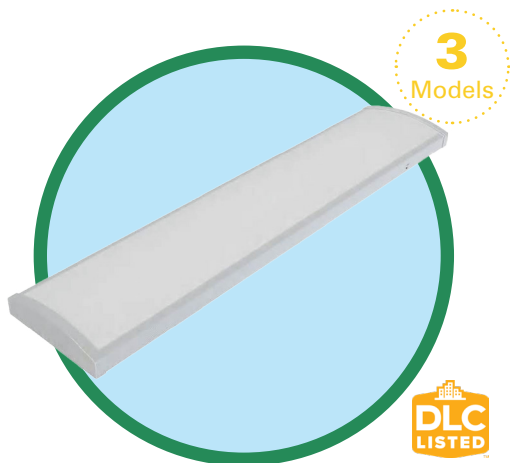
Order Code	Model #	Length	Watts Selectable	CCT Selectable	Lumens
11840	LST2WSCCTD1S	2ft	15W, 20W, or 25W	3500K, 4000K, or 5000K	1950LM 2600LM 3250LM
11842	LST4WSCCTD1S	4ft	22W, 28W, or 40W	3500K, 4000K, or 5000K	2860LM 3640LM 5200LM
11843	LST8WSCCTD1S	8ft	65W, 75W, or 90W	3500K, 4000K, or 5000K	8450LM 9750LM 11700LM

Optional Accessories

Emergency back-up Driver, Microwave, Occupancy Sensor, Sensor Remote Control, Wire Guards, Connectors, and Advanced Controls are available.

Wrap Light - Color & Watt Selectable

The Wrap Light fixture is the perfect solution for offices, stairways, bathrooms, and storage areas.



VOLTAGE

120/277V; 347V

WATTAGE SELECTABLE

15W up to 50W

LUMENS

1725 up to 5750

COLOR SELECTABLE

3500K, 4000K, 5000K

FEATURES

- + 3-Stage brightness adjustable
- + 3 CCT color selectable
- + Driver standard with 0-10V dimming (prewired)
- + UL 1598 damp and dry locations
- + Dimming range 10% to 100%
- + Steel housing with a white finish
- + 50,000 rated life
- + Wide body available 9.8" width
- + EarthConnect compatible

COMPATIBLE

with EarthConnect®
Network Lighting Controls



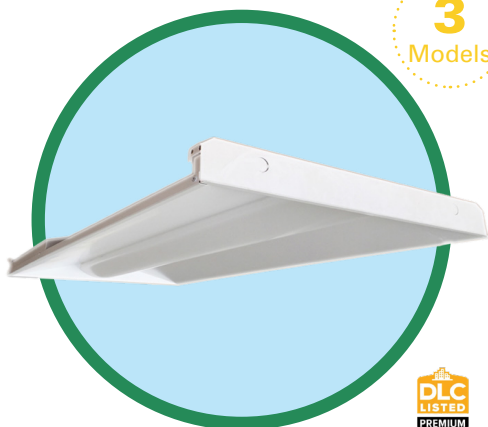
Order Code	Model #	Length	Watts Selectable	CCT Selectable	Lumens
11905	LW2WSCCTD5S	2ft	15W, 20W, or 25W	3500K, 4000K, or 5000K	1725 2300 2875
11906	LW4WSCCTD5S	4ft	30W, 40W, or 50W	3500K, 4000K, or 5000K	3450 4600 5750
11907 *Wide Body	LW4WSCCTD5WB	4ft	30W, 40W, or 50W	3500K, 4000K, or 5000K	3450 4600 5750

Optional Accessories

Emergency back-up Driver, Microwave, Occupancy Sensor, Sensor Remote Control, Harness + Joint Kit, VHook + Chain, and Advanced Controls are available.

LED Troffers

LED Troffers are ideal for construction, renovation, and retrofit commercial applications.



3
Models



VOLTAGE
120/277V; 347V

WATTAGE SELECTABLE
20W up to 34W

LUMENS
2500 up to 4250

COLOR SELECTABLE
3500K, 4000K, 5000K

FEATURES

- + 3-Stage brightness adjustable
- + 3 CCT color selectable
- + 0-10V dimming
- + Dimming range of 10% to 100%
- + Basket lens is securely mounted
- + Easily installs in drop ceiling T-Bar grids
- + Earthquake clips are integral to the frame
- + Acrylic Lens
- + UL 1598 for dry and damp locations
- + 50,000 rated life
- + EarthConnect compatible
- + Plug + Play Sensor

COMPATIBLE
with EarthConnect®
Network Lighting Controls



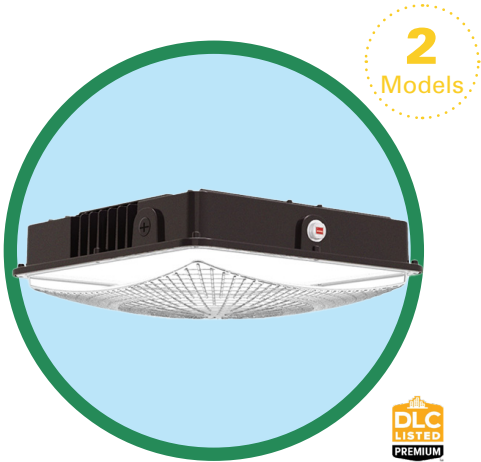
Order Code	Model #	Sizes	Watts Selectable	CCT Selectable	Lumens
11972	LTF1X4WSCCTD5	1x4	20W, 25W, or 30W	3500K, 4000K, or 5000K	2500LM 3125LM 3750LM
11971	LTF2X2WSCCTD5	2x2	18W, 26W, 35W	3500K, 4000K, or 5000K	2200LM 3300LM 4400LM
11970	LTF2X4WSCCTD5	2x4	26W, 34W, or 44W	3500K, 4000K, or 5000K	3300LM 4400LM 5500LM

Optional Accessories

PIR Sensor, Emergency Back-up Driver, Recessed Drywall Kit, Surface Mount Kits, and Advanced Controls are available

Square Canopy

The Square Canopy is ideal for parking garages and warehouses.



VOLTAGE
120/277V

WATTAGE SELECTABLE
30W up to 120W

LUMENS
3900 up to 15600

COLOR SELECTABLE
3000K, 4000K, 5000K

FEATURES

- + 3-Stage brightness adjustable
- + 3 CCT color selectable
- + 0-10V dimming
- + Dimming range of 10% to 100%
- + IP65 wet location rated, UL listed
- + 4kV ANSI surge protection included
- + Various mounting capabilities
- + Polycarbonate Lens
- + 50,000 hr rated life

Order Code	Model #	Watts Selectable	CCT Selectable	Lumens
11625	CA50WSCCTBK1	30W, 40W, or 50W	3000K, 4000K, or 5000K	3900LM 5200LM 6500LM
11626	CA120WSCCTBK1	72W, 96W, or 120W	3000K, 4000K, or 5000K	9300LM 12400LM 15600LM

Round Canopy

The Round Canopy is ideal for parking garages and warehouses.

3
Models



VOLTAGE

120/277V; 347V

WATTAGE

40W, 60W, 100W

LUMENS

5400, 8100, 13750

COLOR SELECTABLE

3000K, 4000K, 5000K

FEATURES

- + Easy installation
- + 3 CCT color selectable
- + Durable cast aluminum housing
- + Built to withstand all climates and allows for a wide temperature range
- + -40°F to 131°F operating range
- + Directly fits onto existing electrical boxes
- + IP65 approved for outdoor wet applications, UL Listed
- + Full function microwave sensor available
- + Various mounting capabilities
- + 50,000 rated life

Order Code	Model #	Watts	CCT Selectable	Lumens
11551	CA40CCTBK5	40W	3000K, 4000K, or 5000K	5400LM
11552	CA60CCTBK5	60W	3000K, 4000K, or 5000K	8100LM
11553	CA100CCTBK5	100W	3000K, 4000K, or 5000K	13750LM

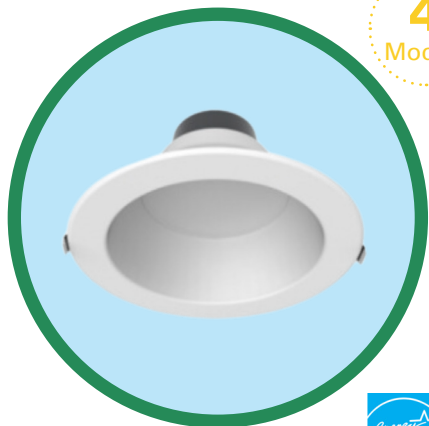
Optional Accessories

Microwave Motion Sensor and Sensor Remote Control are available.

Commercial Downlight

Commercial Downlights are perfect for wet locations such as soffit and covered walkway installations, out of direct weather.

4
Models



VOLTAGE

120/277V

WATTAGE SELECTABLE

5W up to 32W

LUMENS

500 up to 3000

COLOR SELECTABLE

2700K, 3000K,
3500K, 4000K, 5000K

COMPATIBLE

with EarthConnect®
Network Lighting Controls



FEATURES

- + 3-Stage brightness adjustable
- + 5 CCT color selectable
- + 0-10V dimming
- + Dimming range of 10% to 100%
- + Architectural recessed lighting, easy installation
- + Durable aluminum housing with spring-loaded retention clips
- + Driver Housing: Cast Aluminum
- + Fixture Body: Spun Aluminum
- + New construction or in retrofit/renovation applications
- + 50,000 rated life
- + EarthConnect compatible

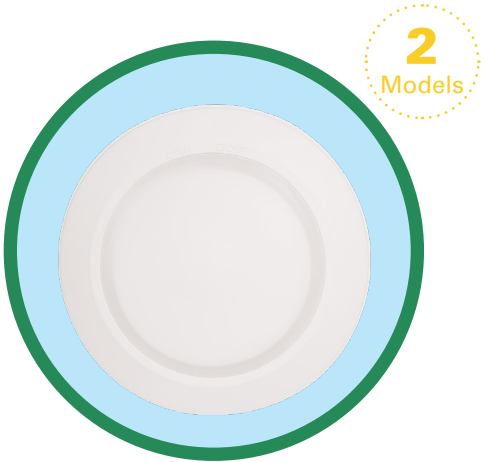
Order Code	Model #	Size	Watts Selectable	CCT Selectable	Lumens
11725	DL4WSCCTWH1	4"	5W, 7W, or 12W	3000K, 3500K, or 4000K	500LM 700LM 1000LM
11418	DL6WSCCTWH1	6"	7W, 10W, or 16W	2700K, 3000K, 3500K, 4000K, or 5000K	700LM 1000LM 1500LM
11419	DL8WSCCTWH1	8"	10W, 15W, or 24W	2700K, 3000K, 3500K, 4000K, or 5000K	1000LM 1500LM 2400LM
11420	DL9WSCCTWH1	9.5"	20W, 25W, or 32W	3000K, 3500K, or 4000K	2000LM 2500LM 3000LM

Optional Accessories

Color Inserts, Goof Ring, T-Grid Plate, Joist Plate, Emergency Back-up Driver, Advanced Controls are available

LED Disk Light

Disk Lights are ideal for tight spaces, such as hallways, corridors, and closets.



VOLTAGE
120V

WATTAGE
10W and 12W

LUMENS
840, 1000

COLOR SELECTABLE
2700K, 3000K, 3500K,
4000K, 5000K

FEATURES

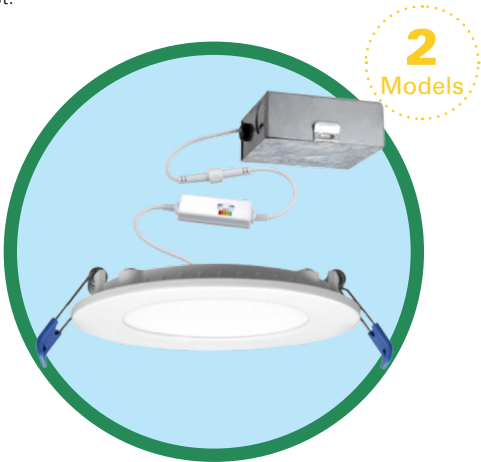
- + 5 CCT color selectable
- + Easily install over J-box or 4" and 6" downlight cans
- + Flexibility to install either with the E26 screw base connector (included) or hardwire directly to junction box
- + UL 1598 listed for damp locations
- + Smooth dimming, dimmable down to 10%
- + Architectural recessed lighting
- + 50,000 hours rated life

Order Code	Model #	Length	Watts	CCT Selectable	Lumens
11598 <small>Wet location rated</small>	DK12CCT4WH2	4"	12W	2700K 3000K, 3500K, 4000K, or 5000K	840LM
11877 <small>Damp location rated</small>	DK10CCTWH2	6"	10W	2700K 3000K 4000K 5000K 6000K	1000LM

***Contractor 12-pack available**
Order Code: 11878

LED Slim Downlight

The Slim Downlight’s wafer-thin design allows this fixture to fit in tight spaces, even directly under the joist.



VOLTAGE
120V

WATTAGE
9W and 14W

LUMENS
650 and 1100

COLOR SELECTABLE
2700K up to 5000K

FEATURES

- + 5 CCT color selectable
- + 90 CRI
- + Easily install over J-box or 4” and 6” downlight cans
- + Edge-Lit LED technology provides even illumination
- + Easily installed in finished dry-wall or architectural tile ceiling in both commercial and residential applications where space is an issue
- + UL Wet Location rated for use in high humidity areas
- + Smooth dimming, dimmable down to 10%
- + Contemporary wafer-thin design
- + Metal trim

Order Code	Model #	Length	Watts	CCT Selectable	Lumens
11696	LSLIM4CCTWH2T	4”	9W	2700K 3000K, 3500K, 4000K, or 5000K	650LM
11697	LSLIM6CCTWH2T	6”	14W	2700K 3000K, 3500K, 4000K, or 5000K	1100LM

Retrofit Downlight

Ideal for use in residential kitchen, bathroom, and family room applications. For commercial applications it provides a cost-effective lighting solution for offices, corridors and restrooms.



VOLTAGE
120V

WATTAGE
7W, 9W

LUMENS
650, 850

COLOR SELECTABLE
2700K up to 5000K

FEATURES

- + 5 CCT color selectable
- + LED recessed trim kit easily converts with 5"/6" or 4"
- + Damp location rated
- + 120VAC, dimmable
- + Easily installs in recessed downlight cans with E26 screw base connector which is included

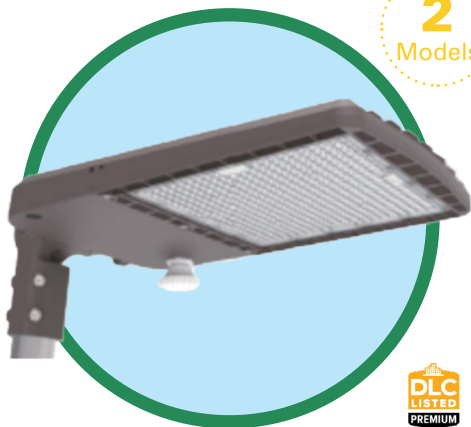
Order Code	Model #	Length	Watts	CCT Selectable	Lumens
11727	LRT47CCTD	4"	7W	2700K, 3000K, 3500K, 4000K, or 5000K	650LM
11726	LRT69CCTD	6"	9W	2700K, 3000K, 3500K, 4000K, or 5000K	850LM

LED Area Light

The Area Light is ideal for exterior illumination for commercial, industrial, and municipal facilities.

2

Models



VOLTAGE

120/277V; 347V

WATTAGE SELECTABLE

70W up to 300W

LUMENS

9100 up to 39000

COLOR SELECTABLE

3000K, 4000K, 5000K

FEATURES

- + 3 Stage brightness adjustment
- + 3 CCT color selectable
- + 0-10V dimming provides for smooth control of light levels
- + Dimming range of 10% to 100%
- + Corrosion resistant finish and screws
- + IP65 wet location
- + Durable die-cast aluminum
- + Standard 6kV surge protector included (10kV available)
- + Changeable mount system
- + Type II, IV, & V Lens
- + 50,000 hrs rated life
- + Pole, tenon, and bull horn available
- + Advanced lighting controls available

COMPATIBLE

with EarthConnect®
Network Lighting Controls



Order Code	Model #	Watts	CCT Selectable	Lumens
11765	AL150WSCCTBK5	70W, 100W, or 150W	3000K, 4000K, or 5000K	9100LM 13000LM 19500LM
11766	AL300WSCCTBK5	200W, 240W, or 300W	3000K, 4000K, or 5000K	26000LM 31200LM 39000LM

Optional Accessories

Slip Fitter, Arm Mount, Trunnion Mount, Yoke Mount, Lens available for Type II, IV, & V, Microwave Sensor, Dusk to Dawn Kit, Sensor Remote Control, 10kV Surge, Advanced Controls, Universal Mount, and Protector are available

For more information please refer to our specification sheets on www.EarthTronics.com

LED Floodlight

The LED Floodlight is perfect for outdoor lighting applications.



VOLTAGE
120V/277V, 347V

WATTAGE SELECTABLE
30W, 50W, 70W

LUMENS
3420 up to 9500

COLOR SELECTABLE
3000K, 4000K, 5000K

FEATURES

- + 3 CCT color selectable
- + Textured architectural bronze powder coat finish with high impact acrylic lens
- + Dimming range of 10% to 100%
- + Architectural Recessed Lighting Easy Installation
- + Reduces sky glow at 3000K
- + 50,000 hrs rated life
- + Ships standard with Knuckle Joint
- + Yoke Mount available
- + IP65 exterior, wet location rated

Order Code	Model #	Watts	CCT Selectable	Lumens
11333 120/277V	FL30CCTBK1	30W	3000K, 4000K, or 5000K	3420LM
11334A 120/277V	FWL700	20W, 40W, 60W	3000K, 4000K, or 5000K	2800LM 5600LM 8400LM
11335 120/347V	FL70CCTBK5	70W	3000K, 4000K, or 5000K	9500LM

Optional Accessories

Knuckle and Yoke Mounts are available

LED Adjustable Wall Pack

The Adjustable Wall Pack is a great choice for outdoor applications and can withstand extreme weather climates.



2
Models

VOLTAGE

120/277V; 347V

WATTAGE SELECTABLE

30W up to 120W

LUMENS

3900 up to 15600

COLOR SELECTABLE

3000K, 4000K, 5000K

FEATURES

- + 3-Stage brightness adjustable
- + 3 CCT color selectable
- + Adjustable 0°-90°
- + Durable die-cast aluminum
- + 0-10v continuous dimming driver
- + Dimming range 0% to 100%
- + Photocell built-in
- + 50,000 hrs rated life
- + IP65 exterior, wet location rated



Order Code	Model #	Watts Selectable	CCT Selectable	Lumens
11627	WPA50WSCCTBK5	30W, 40W, or 50W	3000K, 4000K, or 5000K	3900LM 5200LM 6500LM
11628	WPA120WSCCTBK5	72W, 96W, or 120W	3000K, 4000K, or 5000K	9360LM 12480LM 15600LM

Traditional Wall Pack

This fixture replaces any wall pack and provides night sky compliance with a 3 CCT Color Selection.

2
Models



VOLTAGE

120/277V; 347V

WATTAGE

20W up to 100W

LUMENS

2700 up to 13500

COLOR SELECTABLE

3000K, 4000K, 5000K

FEATURES

- + 3 CCT color selectable
- + Night sky compliant and reduces sky glow at 3000K
- + Durable die-cast aluminum
- + 0-10v continuous dimming driver
- + Built in Photocell
- + Dimming range 0% to 100%
- + Tempered and impact resistant clear prismatic borosilcate glass lens
- + Operates down to -40°F
- + IP65 wet location rated
- + 6kV Surge protector standard

Order Code	Model #	Watts	CCT Selectable	Lumens
11864	WPTWS40CCTBK5	20W, 30W, or 40W	3000K, 4000K, or 5000K	2700LM 4050LM 5400LM
11865	WPTWS100CCTBK5	60W, 80W, or 100W	3000K, 4000K, or 5000K	8100LM 10800LM 13500LM

Mini Wall Pack

Mini Wall Packs provide exterior wide-flood area illumination for commercial, industrial, and municipal facilities.



VOLTAGE
120/277V

WATTAGE SELECTABLE
15W, 20W, 25W

LUMENS
1800, 2400, 3000

COLOR SELECTABLE
3000K, 4000K, 5000K

FEATURES

- + Night sky compliant
- + Dimmable
- + Durable die-cast aluminum housing
- + Photocell installed
- + IP65 rated for wet locations
- + 3000K for reduce sky-glow
- + DLC® Premium
- + Emergency Backup available

Order Code	Model #	Watts Selectable	CCT Selectable	Lumens
11835	LWPMWS25CCTBK1EM *with Emergency Back-up	15W, 20W, or 25W	3000K, 4000K, or 5000K	2200LM 3000LM 3400LM
11833	LWPMWS25CCTBK1	15W, 20W, or 25W	3000K, 4000K, or 5000K	2200LM 3000LM 3440LM

LED Yard Light

Yard Lights work from dusk to dawn giving out the perfect night illumination.



VOLTAGE

120/277V

WATTAGE SELECTABLE

36W, 49W, 60W

LUMENS

4500 up to 7500

COLOR SELECTABLE

3000K, 4000K, 5000K

FEATURES

- + 3-Stage brightness adjustable
- + 3 CCT color selectable
- + Available in bronze or gray finish
- + Built with an integrated photocell sensor feature that provides dusk to dawn operation
- + Polyester powder coat finish
- + Suitable for wall or pole mount applications
- + IP65 rated for wet locations, outdoor use
- + -40°F to 104°F operating range

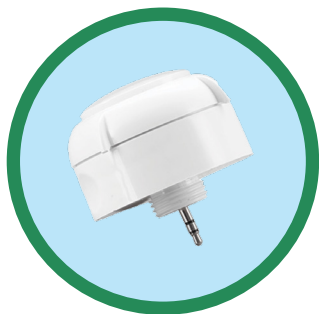
Order Code	Model #	Color	Watts Selectable	CCT Selectable	Lumens
11698	LBWSCCTBZ1	Bronze	36W, 48W, or 60W	3000K, 4000K, or 5000K	4500LM 6000LM 7500LM
11699	LBWSCCTWH1	Gray	36W, 48W, or 60W	3000K, 4000K, or 5000K	4500LM 6000LM 7500LM

Optional Accessories

Arm Mounts are available

Bluetooth® Mesh Sensors

EarthConnect is a mesh network lighting control system that makes it easy for commercial facilities to maximize energy savings, improve comfort and achieve building code compliance for indoor and outdoor applications.



Order Code	Model #	For Use With	Color	Input Voltage
11806	ECUFOPIRLV	Specific Highbay fixtures and Canopy fixtures	White	12V DC

FEATURES

- + Plug & Play with sensor port pre-installed into fixture
- + Daylight harvesting/ photocell threshold, allows for continuous dimming with natural light

- + Indoor/ Outdoor use, damp location rated
- + Personal control via App or wireless wall switch



Order Code	Model #	For Use With	Color	Input Voltage
11963	EFS106-AUX-W	LED Area Lights	Black	12V DC

FEATURES

- + Photocell+PIR sensing with AlgoH2 algorithm for accurate detection up to 40ft without false triggers
- + Photocell for Dusk to Dawn operation

- + UV-protection nylon housing for durability
- + IP66 rated for wet locations and outdoor use
- + Easy set light levels by time of day and by activity



Order Code	Model #	For Use With	Color	Input Voltage
11805	ECHBP1R1	LED Linear Highbay	White	AC120/277VAC, 50-60Hz

FEATURES

- + Sensor built-in into fixture
- + Features a PIR occupancy sensor which detects motion in the coverage area and automatically turns off light when motion is no longer detected

- + Daylight harvesting/ photocell threshold, allows for continuous dimming with natural light
- + Personal control via App or wireless wall switch

Fixture Controllers

EarthConnect is a mesh network lighting control system that makes it easy for commercial facilities to maximize energy savings, improve comfort and achieve building code compliance for indoor and outdoor applications.



Order Code	Model #	For Use With	Bluetooth	Input Voltage
11799	ECPPFCBT1	LED Troffers, Panels, and Commercial Downlights	Yes	120-277VAC, 60Hz

FEATURES

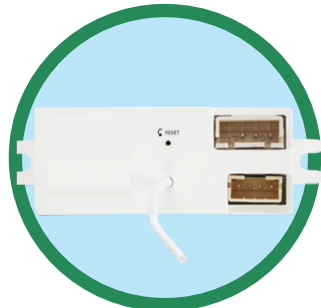
- + Single Channel
- + 120/277VAC, 50-60Hz
- + Use of relay, 0-10V dimming
- + Communicates with EarthConnect sensors in the same zone
- + Utilizes Bluetooth® mesh technology for reliable and secure communication
- + Controlled via EarthConnect mobile app, keypad or sensors (purchased separately)



Order Code	Model #	For Use With	Bluetooth	Input Voltage
11800	ECPPFC1	Vapor, Strips, Troffers, Panels, Commercial Downlights	No	AC120/277VAC 14AWG

FEATURES

- + Single Channel, Sensor ready
- + High efficiency, switching power supply and a 10a relay
- + Designed to operate with 11801 Bluetooth® Mesh Sensors
- + Factory installed with order
- + 120/277VAC, 60Hz
- + Indoor use only
- + 0-10V dimming



Order Code	Model #	For Use With	Bluetooth	Input Voltage
11804	ECFALV	11803	Yes	12V DC

FEATURES

- + Operates on 12VDC
- + Integral Bluetooth module
- + Designed for integration into luminaires for Luminaire Level Lighting Control (LLLC)
- + Sensor-ready attachment port for EarthTronics microwave sensor 11803
- + 0-10V dimming compatible
- + Full functioning with EarthConnect Mobile apps

Sensors

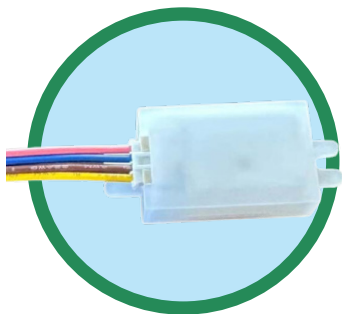
EarthConnect is a mesh network lighting control system that makes it easy for commercial facilities to maximize energy savings, improve comfort and achieve building code compliance for indoor and outdoor applications.



Order Code	Model #	For Use With	Bluetooth	Input Voltage
11801	ECPIRLVE	Fixture controller 11800	Yes	DC 12V

FEATURES

- + Sensor provides daylight harvesting and PIR
- + This sensor is Bluetooth® Mesh
- + Indoor use only
- + Ceiling mount adapter is available
- + Controlled via EarthConnect mobile app or keypad (purchased separately)



Order Code	Model #	For Use With	Bluetooth	Input Voltage
11803	ECMVLVE	11804 Bluetooth® Mesh fixture controller	Yes	DC 12V

FEATURES

- + 11803, ECMVLVE is a microwave occupancy sensor
- + Factory installed with order
- + IP20 rating
- + For use with 11804 fixture controller



Order Code	Model #	For Use With	Bluetooth	Input Voltage
11964	ECPIRWLAC	Ceiling Mount Area Sensor	Yes	120-277V

FEATURES

- + 120-277VAC input
- + 600 sq ft room coverage
- + Daylight Harvesting
- + Dual-tech PIR + Ultrasonic technology provides high accuracy and wide coverage

NOTES



CONTACT US TO LEARN MORE



Toll Free: 866.632.7840



www.earthtronics.com



Email: contact@earthtronics.com

**Scan for Online
Catalog**



For the most up to date specifications,
please visit earthtronics.com.
Specifications are subject to change.

