



PRODUCT CATALOG

LED Commercial Lighting Fixtures

TABLE OF CONTENTS

3 LED INDOOR FIXTURES pg. 3-20

21 LED OUTDOOR FIXTURES pg. 21-27

EarthTronics is an LED lighting product manufacturer and supplier dedicated to developing innovative energy-efficient lighting products that provide a positive economic and environmental impact for our customers. EarthTronics lighting products are focused on commercial and institutional customers for use in office, warehousing, retail, education, long term care, hospitality, and manufacturing.

Since 2007, we have been at the cutting edge of LED products. Our home resides in Norton Shores, MI, but we can be found anywhere you need a little light.

Where Efficiency Meets Innovation



Linear Highbay

This fixture's lightweight and compact design is great for warehouse and manufacturing applications.



4
Models



VOLTAGE
120/277V

WATTAGE
92W up to 270W

LUMENS
14000 up to 40500

COLORS
5000K

FEATURES

- + Lightweight, compact design
- + 6kV ANSI surge protection standard
- + PMMA lens
- + Durable steel housing
- + Up to 50° C true ambient temperature
- + Driver standard with 0-10V dimming (prewired)
- + Suitable for damp locations
- + Dimmable
- + 100,000 hrs rated life L70
- + VHook + chain included
- + EarthConnect available for 120V and 277V application

COMPATIBLE
with EarthConnect®
Network Lighting Controls
120V and 277V ONLY



| Order Code | Model # | Length | Watts | CCT | Lumens |
|------------|-------------|--------|-------|-------|---------|
| 11685 | HBL9250WH1 | 1.3ft | 92W | 5000K | 13800LM |
| 11687 | HBL13550WH1 | 1.3ft | 135W | 5000K | 20250LM |
| 11689 | HBL18550WH1 | 1.9ft | 185W | 5000K | 27750LM |
| 11691 | HBL27050WH1 | 2.6ft | 270W | 5000K | 40500LM |

Optional Accessories

Pendant Mount and Surface Mount Kits, Wire Guards, PIR Sensor, Advanced Controls Emergency Back-Up Driver, and 6ft Cord are available.

Linear Highbay - Color & Watt Selectable

This fixture's lightweight and compact design is great for warehouse and manufacturing applications.



3
Models

VOLTAGE
120/277V

WATTAGE
100W up to 270W

LUMENS
15000 up to 40500

COLORS
4000K, 5000K



FEATURES

- + 3-Stage brightness adjustable
- + 2 CCT color selectable
- + Lightweight, compact design
- + 6kV ANSI surge protection standard
- + PMMA lens
- + Durable steel housing
- + Up to 50° C true ambient temperature
- + Driver standard with 0-10V dimming (prewired)
- + Suitable for damp locations
- + 100,000 hrs rated life L70
- + Hanging hardware inclosed
- + 12VDC easy twist audio jack receptacle compatible with EarthConnect and other controls

COMPATIBLE
with EarthConnect®
Network Lighting Controls



| Order Code | Model # | Length | Watts Selectable | CCT Selectable | Lumens |
|------------|----------------|--------|---------------------------|----------------|-------------------------------|
| 11855 | HBLWS135CCTWH1 | 1.3ft | 100W, 115W, or 135W | 4000K 5000K | 15000LM 17250LM 20250LM |
| 11856 | HBLWS185CCTWH1 | 1.9ft | 135W, 155W, or 185W | 4000K 5000K | 20250LM 23250LM 27750LM |
| 11857 | HBLWS270CCTWH1 | 2.6ft | 200W, 230W, or 270W | 4000K 5000K | 30000LM 34500LM 40500LM |

Optional Accessories

Pendant Mount and Surface Mount Kits, Wire Guards, PIR Sensor, Emergency Back-Up Driver, 6ft Cord, Advanced Controls are available.

UFO Highbay - Color & Watt Selectable

The UFO's simple and efficient design is great for warehouse and manufacturing applications.

5
Models

VOLTAGE
120/277V

WATTAGE SELECTABLE
50W up to 300W

LUMENS
16000 up to 48000

COLOR SELECTABLE
4000K, 5000K

COMPATIBLE
with EarthConnect®
Network Lighting Controls

Earth
Connect



FEATURES

- + Simple design
- + 2 CCT color selectable
- + 3-Stage brightness adjustment
- + ETL sanitation listed, Conforms to NSF Std. 2
- + Ship with standard 6' 18/3 SJT Whip
- + Corrosion resistance die-cast aluminum alloy
- + IP65 wet location rated
- + Polycarbonate lens is IK08 rated
- + 100,000 hrs rated life L80
- + 6kV surge protector
- + 12VDC easy twist audio jack receptacle compatible with EarthConnect and other controls

| Order Code | Model # | Watts Selectable | CCT Selectable | Lumens |
|------------------------|----------------|---------------------------|----------------|-------------------------|
| 11887 | HBU150WSCCTB1S | 100W, 125W, or 150W | 4000K 5000K | 16000 20000 24000 |
| 11888 | HBU240WSCCTB1S | 150W, 200W, or 240W | 4000K 5000K | 24000 32000 38400 |
| 11890 *White Finish | HBU240WSCCTW1S | 150W, 200W, or 240W | 4000K 5000K | 24000 32000 38400 |
| 11889 | HBU300WSCCTB1S | 200W, 240W, or 300W | 4000K 5000K | 32000 38400 48000 |
| 11904 *White Finish | HBU300WSCCTW1S | 200W, 240W, or 300W | 4000K 5000K | 32000 38400 48000 |

Optional Accessories

Trunnion Mounts, Wire Guards, Reflectors, Remote Control, Emergency Back-up Driver, Microwave Sensor, 480V Step Down Transformer, and Advanced Controls are available.

For more information please refer to our specification sheets on www.EarthTronics.com

Washdown Highbay - Watt Selectable

The Washdown Highbay series is rated IP69K and ETL Sanitation Listed for use in food processing and clean room applications.



VOLTAGE

120/277V

WATTAGE SELECTABLE

100W, 150W, 200W

LUMENS

15000, 22500, 30000

COLORS

5000K

FEATURES

- + 3-Stage brightness adjustment
- + 0-10V dimming (prewired)
- + NSF Std. rated (for food safety)
- + IP69K rated for Pressure Washdown
- + 4kV surge protection built in
- + Polycarbonate lens, shatter proof, stronger than glass
- + Suitable for damp locations
- + Durable and corrosion Resistant powder coat finish
- + 100,000 hours rated life L70
- + 12VDC easy twist audio jack receptacle compatible with EarthConnect and other controls

COMPATIBLE

with EarthConnect®
Network Lighting Controls

Earth
Connect

| Order Code | Model # | Watts Selectable | CCT | Lumens |
|------------|------------|---------------------------|-------|-------------------------|
| 11851 | HBWWS50WH1 | 100W, 150W, or 200W | 5000K | 15000 22500 30000 |

Optional Accessories

12VDC Microwave Motion Sensor, Sensor Remote Control, Advanced Controls are available.

Back-Light Panel - Color & Watt Selectable

Perfect fit for office buildings, schools, and common areas.



VOLTAGE

120/347V

WATTAGE SELECTABLE

20W up to 45W

LUMENS

2200 up to 5000

COLOR SELECTABLE

3500K, 4000K, 5000K

FEATURES

- + 3-Stage brightness adjustment
- + 3 CCT color selectable
- + Direct illumination provides true color over the life of the product
- + Integral LED lens is constructed from PMMA and provides even illumination across the face of the panel
- + Stamped steel LED housing is part of a rigid fixture design
- + Fixture interior painted white for over 96% reflectivity
- + Contractor friendly junction box for easy installation
- + 0-10V dimming is standard
- + EarthConnect available for 120V and 277V application

COMPATIBLE

with EarthConnect®
Network Lighting Controls

120V and 277V ONLY



| Order Code | Model # | Watts Selectable | Color Selectable | Lumens |
|--------------|----------------|------------------------|------------------------------|----------------------|
| 11674 1x4 | LDFP1X4WSCCTD5 | 30W, 35W, or 45W | 3500K, 4000K, or 5000K | 3750 4375 5000 |
| 11496 2x2 | LDFP2X2WSCCTD1 | 20W, 30W, or 35W | 3500K, 4000K, or 5000K | 2200 3300 4000 |
| 11498 2x4 | LDFP2X4WSCCTD1 | 30W, 35W, or 45W | 3500K, 4000K, or 5000K | 3300 4000 5000 |

Optional Accessories

Emergency Back-up Driver, Surface mount kits, Dry-wall Kit, and Advanced Controls available.

Stairwell - Color & Watt Selectable

48" long LED Stairwell for indoor applications.



VOLTAGE

120/347V

WATTAGE SELECTABLE

35W, 45W, 55W

LUMENS

4200, 5400, 6600

COLOR SELECTABLE

3500K, 4000K, 5000K

FEATURES

- + 3-Stage brightness adjustable
- + 3 CCT color selectable
- + Standard 48" long
- + Direct illumination provides true color over the life of the product
- + Suitable for dry and damp locations
- + Wall mounting
- + Durable steel with polycarbonate lens
- + 0-10V dimming is standard
- + 50,000 hrs rated life
- + EarthConnect compatible
- + Microwave sensor and remote control are available

COMPATIBLE

with EarthConnect®
Network Lighting Controls



| Order Code | Model # | Watts Selectable | CCT Selectable | Lumens |
|------------|----------------|------------------------|------------------------------|----------------------|
| 11897 | LSW4WS55CCTWH1 | 35W, 45W, or 55W | 3500K, 4000K, or 5000K | 4200 5400 6600 |

Optional Accessories

Emergency Back-up Driver, Microwave Sensor, Sensor Remote Control, and Advanced Controls are available.

VaporTight - Color & Watt Selectable

This vapor tight fixture is ideal for commercial kitchens, parking garage, walkways, stairwells, under canopy, and where water, humidity and dust may occur.



3

Models

VOLTAGE

120/277V

WATTAGE SELECTABLE

15W up to 90W

LUMENS

1950 up to 11700

COLOR SELECTABLE

3500K, 4000K, 5000K



FEATURES

- + 3-Stage brightness adjustable
- + 3 CCT color selectable
- + Integrated lens and LED module provide easy installation
- + Driver standard with 0-10V dimming (prewired)
- + Fixture is corrosion resistant
- + The polycarbonate housing and lens are sealed to and tested for IP65
- + Dimmable
- + Latches are stainless steel
- + 100,000 hours rated life L70
- + NEMA 4x
- + EarthConnect compatible
- + Microwave sensor and remote control are available

COMPATIBLE

with EarthConnect®
Network Lighting Controls

| Order Code | Model # | Length | Watts Selectable | CCT Selectable | Lumens |
|------------|--------------|--------|------------------------|------------------------------|-----------------------------|
| 11844 | LVT2WSCCTD1S | 2ft | 15W, 20W, or 25W | 3500K, 4000K, or 5000K | 1950LM 2600LM 3250LM |
| 11845 | LVT4WSCCTD1S | 4ft | 34W, 38W, or 45W | 3500K, 4000K, or 5000K | 4420LM 4940LM 5850LM |
| 11846 | LVT8WSCCTD1S | 8ft | 65W, 75W, or 90W | 3500K, 4000K, or 5000K | 8450LM 9750LM 11700LM |

Optional Accessories

Emergency Back-up Driver, Microwave Occupancy Sensor, Sensor Remote Control, and Advanced Controls are available.

Vapor Tight Highbay

This vapor tight highbay fixture is ideal for food processing areas, warehouses, and other wet, dusty, and dirty environments.



2
Models

VOLTAGE

120-347V

WATTAGE SELECTABLE

100W up to 200W

LUMENS

16000 up to 32000

COLOR SELECTABLE

4000K, 5000K

FEATURES

- + 3-Stage brightness adjustable
- + 2 CCT color selectable
- + Driver standard with 0-10V dimming (prewired)
- + NEMA 4x
- + NSF Certified, ETL Sanitation
- + The UL 94 5VA polycarbonate housing and lens are sealed to and tested for IP66
- + Stainless steel latches
- + Daylight harvesting and dim to off functions
- + 100,000 hours rated life L70
- + EarthConnect compatible
- + 47.5" L x 10.5" W

COMPATIBLE
with EarthConnect®
Network Lighting Controls



| Order Code | Model # | Length | Watts Selectable | CCT Selectable | Lumens |
|------------|-----------------|--------|---------------------------|----------------|-------------------------------|
| 11900 | LVTHBWS135CCTD5 | 4ft | 100W, 115W, or 135W | 4000K 5000K | 16000LM 18400LM 21600LM |
| 11901 | LVTHBWS200CCTD5 | 4ft | 155W, 185W, or 200W | 4000K 5000K | 24800LM 29600LM 32000LM |

Optional Accessories

Emergency Back-up Driver, Microwave Sensor, Sensor Remote Control, and Advanced Controls are available.

Strip Light - Color & Watt Selectable

This Strip Light is advanced control ready and is great for general lighting and manufacturing applications.



3

Models



VOLTAGE

120/277V

WATTAGE SELECTABLE

15W up to 90W

LUMENS

1950 up to 11700

COLOR SELECTABLE

3500K, 4000K, 5000K

FEATURES

- + 3-Stage brightness adjustable
- + 3 CCT color selectable
- + Driver standard with 0-10V dimming (prewired)
- + LED array is integrated in the lens assembly and snap locks to the frame for easy installation
- + Faster surface or row mounting with available connectors kits
- + UL 1598 damp and dry locations
- + Dimming range 10% to 100%
- + 100,000 hours rated life L70
- + 4kV ANSI surge protection included (10kV available)

COMPATIBLE

with EarthConnect®
Network Lighting Controls

120V and 277V ONLY



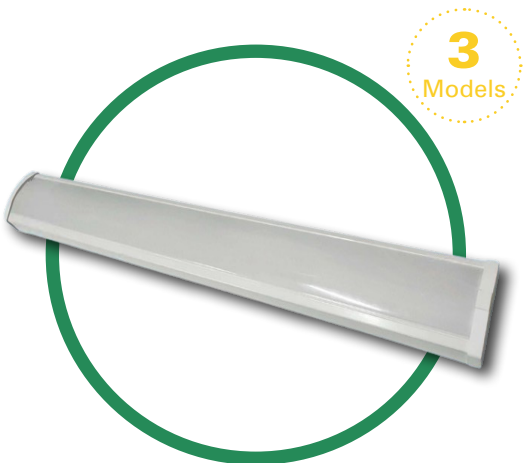
| Order Code | Model # | Length | Watts Selectable | CCT Selectable | Lumens |
|------------|--------------|--------|------------------------|------------------------------|-----------------------------|
| 11840 | LST2WSCCTD1S | 2ft | 15W, 20W, or 25W | 3500K, 4000K, or 5000K | 1950LM 2600LM 3250LM |
| 11842 | LST4WSCCTD1S | 4ft | 22W, 28W, or 40W | 3500K, 4000K, or 5000K | 2860LM 3640LM 5200LM |
| 11843 | LST8WSCCTD1S | 8ft | 65W, 75W, or 90W | 3500K, 4000K, or 5000K | 8450LM 9750LM 11700LM |

Optional Accessories

Emergency back-up Driver, Microwave, Occupancy Sensor, Sensor Remote Control, Wire Guards, Connectors, and Advanced Controls are available.

Wrap Light - Color & Watt Selectable

The Wrap Light fixture is the perfect solution for offices, stairways, bathrooms, and storage areas.



3
Models

VOLTAGE

120/277V

WATTAGE SELECTABLE

15W up to 50W

LUMENS

1725 up to 5750

COLOR SELECTABLE

3500K, 4000K, 5000K

FEATURES

- + 3-Stage brightness adjustable
- + 3 CCT color selectable
- + Driver standard with 0-10V dimming (prewired)
- + UL 1598 damp and dry locations
- + Dimming range 10% to 100%
- + Steel housing with a white finish
- + 50,000 rated life
- + Wide body available 9.8" width
- + EarthConnect compatible

COMPATIBLE
with EarthConnect®
Network Lighting Controls



| Order Code | Model # | Length | Watts Selectable | CCT Selectable | Lumens |
|------------------------|--------------|--------|------------------------|------------------------------|----------------------|
| 11905 | LW2WSCCTD5S | 2ft | 15W, 20W, or 25W | 3500K, 4000K, or 5000K | 1725 2300 2875 |
| 11906 | LW4WSCCTD5S | 4ft | 30W, 40W, or 50W | 3500K, 4000K, or 5000K | 3450 4600 5750 |
| 11907 *Wide Body | LW4WSCCTD5WB | 4ft | 30W, 40W, or 50W | 3500K, 4000K, or 5000K | 3450 4600 5750 |

Optional Accessories

Emergency back-up Driver, Remote, Occupancy Sensor, Sensor Microwave, Harness + Joint Kit, VHook + Chain, and Advanced Controls are available.

LED Troffers

LED Troffers are ideal for construction, renovation, and retrofit commercial applications.



3
Models

VOLTAGE

120/277V

WATTAGE SELECTABLE

20W up to 34W

LUMENS

2500 up to 4250

COLOR SELECTABLE

3500K, 4000K, 5000K



FEATURES

- + 3-Stage brightness adjustable
- + 3 CCT color selectable
- + 0-10V dimming
- + Dimming range of 10% to 100%
- + Basket lens is securely mounted
- + Easily installs in drop ceiling T-Bar grids
- + Earthquake clips are integral to the frame
- + Acrylic Lens
- + UL 1598 for dry and damp locations
- + 50,000 rated life
- + EarthConnect compatible

COMPATIBLE
with EarthConnect®
Network Lighting Controls

**Earth
Connect**

| Order Code | Model # | Sizes | Watts Selectable | CCT Selectable | Lumens |
|------------|---------------|-------|------------------------|------------------------------|----------------------------|
| 11672 | LTF1X4WSCCTD5 | 1x4 | 20W, 25W, or 30W | 3500K, 4000K, or 5000K | 2500LM 3125LM 3750LM |
| 11604 | LTF2X2WSCCT1 | 2x2 | 20W, 25W, or 30W | 3500K, 4000K, or 5000K | 2500LM 3125LM 3750LM |
| 11605 | LTF2X4WSCCT1 | 2x4 | 25W, 30W, or 34W | 3500K, 4000K, or 5000K | 3125LM 3750LM 4250LM |

Optional Accessories

PIR Sensor, Emergency Back-up Driver, Recessed Drywall Kit, Surface Mount Kits, and Advanced Controls are available

Square Canopy

The Square Canopy is ideal for parking garages and warehouses.

2
Models



VOLTAGE

120/277V

WATTAGE SELECTABLE

30W up to 120W

LUMENS

3900 up to 15600

COLOR SELECTABLE

3000K, 4000K, 5000K

FEATURES

- + 3-Stage brightness adjustable
- + 3 CCT color selectable
- + 0-10V dimming
- + Dimming range of 10% to 100%
- + IP65 wet location rated, UL listed
- + 4kV ANSI surge protection included
- + Various mounting capabilities
- + Polycarbonate Lens
- + 50,000 hr rated life

| Order Code | Model # | Watts Selectable | CCT Selectable | Lumens |
|------------|---------------|-------------------------|------------------------------|------------------------------|
| 11625 | CA50WSCCTBK1 | 30W, 40W, or 50W | 3000K, 4000K, or 5000K | 3900LM 5200LM 6500LM |
| 11626 | CA120WSCCTBK1 | 72W, 96W, or 120W | 3000K, 4000K, or 5000K | 9300LM 12400LM 15600LM |

Round Canopy

The Round Canopy is ideal for parking garages and warehouses.

2
Models



VOLTAGE

120/347V

WATTAGE

60W, 100W

LUMENS

8100, 13750

COLOR SELECTABLE

3000K, 4000K, 5000K

FEATURES

- + Easy installation
- + 3 CCT color selectable
- + Durable cast aluminum housing
- + Built to withstand all climates and allows for a wide temperature range
- + -40°F to 131°F operating range
- + Directly fits onto existing electrical boxes
- + IP65 approved for outdoor wet applications, UL Listed
- + Full function microwave sensor available
- + Various mounting capabilities
- + 50,000 rated life

| Order Code | Model # | Watts | CCT Selectable | Lumens |
|------------|-------------|-------|------------------------|---------|
| 11552 | CA60CCTBK5 | 60W | 3000K, 4000K, or 5000K | 8100LM |
| 11553 | CA100CCTBK5 | 100W | 3000K, 4000K, or 5000K | 13750LM |

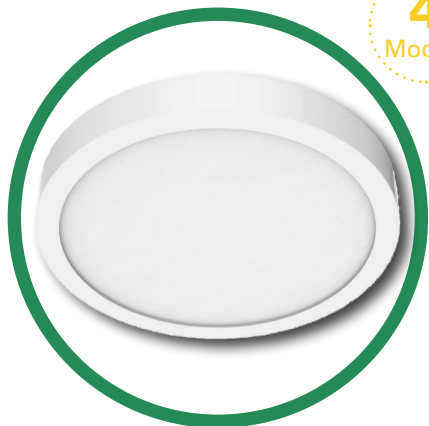
Optional Accessories

Microwave Motion Sensor and Sensor Remote Control are available.

Architectural LED Panel Light

Designed for easy installation in retrofit or new construction projects.

4
Models



VOLTAGE

120VAC

WATTAGE

10W, 12W, 18W, 24W

LUMENS

650 up to 2000

COLOR SELECTABLE

2700K, 3000K, 3500K,
4000K, 5000K

SIZES

5", 7", 9", 12"

FEATURES

- + Easy installation
- + 5 CCT color selectable
- + Exceptional color rendering 80+ CRI
- + 100% to 5% dimming range
- + Smooth edgelit LED technology
- + 50,000 hour rated life
- + UL Listed

| Size | Watts | Lumens | CCT |
|------|-------|---------|--------------------------------------|
| 5" | 10W | 650 LM | 2700K, 3000K, 3500K, 4000K, or 5000K |
| 7" | 12W | 1100 LM | 2700K, 3000K, 3500K, 4000K, or 5000K |
| 9" | 18W | 1550 LM | 2700K, 3000K, 3500K, 4000K, or 5000K |
| 12" | 24W | 2000 LM | 2700K, 3000K, 3500K, 4000K, or 5000K |

Trim Ring Options: Black or Satin Nickel

Optional Accessories

Emergency Back-up Driver, Microwave Sensor, Sensor Remote Control, and Advanced Controls are available

Commercial Downlight

Commercial Downlights are perfect for wet locations such as soffit and covered walkway installations, out of direct weather.

6
Models



VOLTAGE

120/347V

WATTAGE SELECTABLE

6W up to 36W

LUMENS

600 up to 3500

COLOR SELECTABLE

2700K, 3000K,
3500K, 4000K, 5000K

COMPATIBLE

with EarthConnect®
Network Lighting Controls

Earth
Connect

FEATURES

- + 3-Stage brightness adjustable
- + 5 CCT color selectable
- + 0-10V dimming
- + Dimming range of 10% to 100%
- + Architectural recessed lighting, easy installation
- + Durable aluminum housing with spring-loaded retention clips
- + Driver Housing: Cast Aluminum
- + Fixture Body: Spun Aluminum
- + New construction or in retrofit/renovation applications
- + 50,000 rated life
- + EarthConnect compatible
- + High output models available in 6" and 8"

| Order Code | Model # | Size | Watts Selectable | CCT Selectable | Lumens |
|-----------------------|---------------|------|------------------------|--|----------------------------|
| 11725 | DL4WSCCTWH1S | 4" | 6W, 8W, or 12W | 2700K, 3000K, 3500K, 4000K, or 5000K | 600LM 800LM 1200LM |
| 11418 | DL6WSCCTWH1S | 6" | 8W, 11W, or 15W | 2700K, 3000K, 3500K, 4000K, or 5000K | 750LM 1100LM 1500LM |
| 11419 | DL8WSCCTWH1S | 8" | 10W, 20W, or 25W | 2700K, 3000K, 3500K, 4000K, or 5000K | 1000LM 1500LM 2000LM |
| 11420 | DL9WSCCTWH1S | 10" | 20W, 25W, or 36W | 2700K, 3000K, 3500K, 4000K, or 5000K | 2000LM 2500LM 3500LM |
| 11852 *High Output | DL6WSHOCCTWH1 | 6" | 15W, 20W, or 30W | 2700K, 3000K, 3500K, 4000K, or 5000K | 1500LM 2000LM 3000LM |
| 11853 *High Output | DL8WSHOCCTWH1 | 8" | 20W, 25W, or 36W | 2700K, 3000K, 3500K, 4000K, or 5000K | 2000LM 2500LM 3500LM |

Optional Accessories

Color Inserts, Goof Ring, T-Grid Plate, Joist Plate, Emergency Back-up Driver, Advanced Controls are available

For more information please refer to our specification sheets on www.EarthTronics.com

LED Disk Light

Disk Lights are ideal for tight spaces, such as hallways, corridors, and closets.



2

Models

VOLTAGE

120V

WATTAGE

10W and 12W

LUMENS

840, 1000

COLOR SELECTABLE

2700K, 3000K, 3500K,
4000K, 5000K

FEATURES

- + 5 CCT color selectable
- + Easily install over J-box or 4" and 6" downlight cans
- + Flexibility to install either with the E26 screw base connector (included) or hardwire directly to junction box
- + UL 1598 listed for dry and damp locations
- + Smooth dimming, dimmable down to 10%
- + Architectural recessed lighting
- + 50,000 rated life

| Order Code | Model # | Length | Watts | CCT Selectable | Lumens |
|------------|-------------|--------|-------|--------------------------------------|--------|
| 11598 | DK12CCT4WH2 | 4" | 12W | 2700K, 3000K, 3500K, 4000K, or 5000K | 840LM |
| 11877 | DK10CCTWH2 | 6" | 10W | 2700K, 3000K, 4000K, 5000K, 6000K | 1000LM |

*Contractor 12-pack available
Order Code: 11878

LED Slim Downlight

The Slim Downlight's wafer-thin design allows this fixture to fit in tight spaces, even directly under the joist.



2

Models

VOLTAGE

120V

WATTAGE

9W and 12W

LUMENS

650 and 850

COLOR SELECTABLE

2700K up to 5000K

FEATURES

- + 5 CCT color selectable
- + Easily install over J-box or 4" and 6" downlight cans
- + Edge-Lit LED technology provides even illumination
- + Easily installed in finished dry-wall or architectural tile ceiling in both commercial and residential applications where space is an issue
- + UL Wet Location rated for use in high humidity areas
- + Smooth dimming, dimmable down to 10%
- + Contemporary wafer-thin design
- + Metal trim

| Order Code | Model # | Length | Watts | CCT Selectable | Lumens |
|------------|---------------|--------|-------|--------------------------------------|--------|
| 11696 | LSLIM4CCTWH2T | 4" | 9W | 2700K, 3000K, 3500K, 4000K, or 5000K | 650LM |
| 11697 | LSLIM6CCTWH2T | 6" | 12W | 2700K, 3000K, 3500K, 4000K, or 5000K | 850LM |

Retrofit Downlight

Ideal for use in residential kitchen, bathroom, and family room applications. For commercial applications it provides a cost-effective lighting solution for offices, corridors and restrooms.



VOLTAGE

120V

WATTAGE

7W, 9W

LUMENS

650, 850

COLOR SELECTABLE

2700K up to 5000K

FEATURES

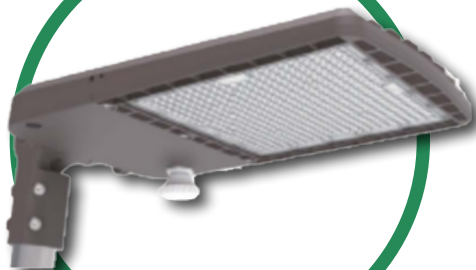
- + 5 CCT color selectable
- + LED recessed trim kit easily converts with 5"/6" or 4"
- + Damp location rated
- + 120VAC, dimmable
- + Easily installs in recessed downlight cans with E26 screw base connector which is included

| Order Code | Model # | Length | Watts | CCT Selectable | Lumens |
|------------|-----------|--------|-------|--|--------|
| 11726 | LRT69CCTD | 6" | 9W | 2700K, 3000K, 3500K, 4000K, or 5000K | 850LM |
| 11727 | LRT47CCTD | 4" | 7W | 2700K, 3000K, 3500K, 4000K, or 5000K | 650LM |

LED Area Light

The Area Light is ideal for exterior illumination for commercial, industrial, and municipal facilities.

2
Models



VOLTAGE

120-347V

WATTAGE SELECTABLE

70W up to 300W

LUMENS

9100 up to 39000

COLOR SELECTABLE

3000K, 4000K, 5000K

FEATURES

- + 3 Stage brightness adjustment
- + 3 CCT color selectable
- + 0-10V dimming provides for smooth control of light levels
- + Dimming range of 10% to 100%
- + Corrosion resistant finish and screws
- + IP65 wet location
- + Durable die-cast aluminum
- + Standard 6kV surge protector included (10kV available)
- + Changeable mount system
- + Type III Lens
- + 50,000 hrs rated life
- + Pole, tenon, and bull horn available
- + NEMA 3-pin photocell kit (dusk to dawn) available

COMPATIBLE

with EarthConnect®
Network Lighting Controls

Earth
Connect

| Order Code | Model # | Watts | CCT Selectable | Lumens |
|------------|---------------|---------------------------|------------------------------|-------------------------------|
| 11765 | AL150WSCCTBK5 | 70W, 100W, or 150W | 3000K, 4000K, or 5000K | 9100LM 13000LM 19500LM |
| 11766 | AL300WSCCTBK5 | 200W, 240W, or 300W | 3000K, 4000K, or 5000K | 26000LM 31200LM 39000LM |

Optional Accessories

Slip Fitter, Arm Mount, Trunion Mount, Yoke Mount, Lens available for Type II, IV, & V, Microwave Sensor, Dusk to Dawn Kit, Sensor Remote Control, 10kV Surge, Advanced Controls, and Protector are available

For more information please refer to our specification sheets on www.EarthTronics.com

LED Floodlight

The LED Floodlight is perfect for outdoor lighting applications.

3
Models



VOLTAGE
120V/277V, 347V

WATTAGE SELECTABLE
30W, 50W, 70W

LUMENS
3420 up to 9500

COLOR SELECTABLE
3000K, 4000K, 5000K

FEATURES

- + 3 CCT color selectable
- + Textured architectural bronze powder coat finish with high impact acrylic lens
- + Dimming range of 10% to 100%
- + Architectural Recessed Lighting Easy Installation
- + Reduces sky glow at 3000K
- + 50,000 hrs rated life
- + Ships standard with Knuckle Joint
- + Yoke Mount available
- + IP65 exterior, wet location rated

| Order Code | Model # | Watts | CCT Selectable | Lumens |
|-------------------|------------|---|------------------------------|--------------------------------------|
| 11333 120/277V | FL30CCTBK1 | 30W | 3000K, 4000K, or 5000K | 3420LM |
| 11334 120/277V | FL50CCTBK1 | 50W | 3000K, 4000K, or 5000K | 5770LM |
| 11335 120/347V | FL70CCTBK5 | 49W, 56W, 63W, or 70W *Wattage Selectable | 3000K, 4000K, or 5000K | 6650LM 7600LM 8550LM 9500LM |

Optional Accessories

Knuckle and Yoke Mounts are available

LED Adjustable Wall Pack

The Adjustable Wall Pack is a great choice for outdoor applications and can withstand extreme weather climates.

2
Models



VOLTAGE
120-347V

WATTAGE SELECTABLE
30W up to 120W

LUMENS
3900 up to 15600

COLOR SELECTABLE
3000K, 4000K, 5000K



FEATURES

- + 3-Stage brightness adjustable
- + 3 CCT color selectable
- + Adjustable 0°-90°
- + Durable die-cast aluminum
- + 0-10v continuous dimming driver
- + Dimming range 0% to 100%
- + Photocell built-in
- + 50,000 hrs rated life
- + IP65 exterior, wet location rated

| Order Code | Model # | Watts Selectable | CCT Selectable | Lumens |
|------------|----------------|-------------------------|------------------------------|------------------------------|
| 11627 | WPA50WSCCTBK5 | 30W, 40W, or 50W | 3000K, 4000K, or 5000K | 3900LM 5200LM 6500LM |
| 11628 | WPA120WSCCTBK5 | 72W, 96W, or 120W | 3000K, 4000K, or 5000K | 9360LM 12480LM 15600LM |

Traditional Wall Pack

This fixture replaces any wall pack and provides night sky compliance with a 3 CCT Color Selection.

2
Models



VOLTAGE

120-347V

WATTAGE

20W up to 100W

LUMENS

2700 up to 13500

COLOR SELECTABLE

3000K, 4000K, 5000K

FEATURES

- + 3 CCT color selectable
- + Night sky compliant and reduces sky glow at 3000K
- + Durable die-cast aluminum
- + 0-10v continuous dimming driver
- + Built in Photocell
- + Dimming range 0% to 100%
- + Tempered and impact resistant clear prismatic borosilcate glass lens
- + Operates down to -40°F
- + IP65 wet location rated
- + 6kV Surge protector standard

| Order Code | Model # | Watts | CCT Selectable | Lumens |
|------------|----------------|-------------------------|------------------------------|------------------------------|
| 11864 | WPTWS40CCTBK5 | 20W, 30W, or 40W | 3000K, 4000K, or 5000K | 2700LM 4050LM 5400LM |
| 11865 | WPTWS100CCTBK5 | 60W, 80W, or 100W | 3000K, 4000K, or 5000K | 8100LM 10800LM 13500LM |

Mini Wall Pack

Mini Wall Packs provide exterior wide-flood area illumination for commercial, industrial, and municipal facilities.



VOLTAGE

120/277V

WATTAGE SELECTABLE

15W, 20W, 25W

LUMENS

1800, 2400, 3000

COLOR SELECTABLE

3000K, 4000K, 5000K

FEATURES

- + 3-Stage brightness adjustable
- + 3 CCT color selectable
- + Architectural bronze finish, anti-corrosion spray, cast alloy housing
- + Durable UV-stabilized PC lens resist corrosion and environmental conditions
- + Suited for wall mounting to provide a wide flood area
- + Dusk to dawn sensor is installed
- + IP65 exterior, wet location rated
- + Night sky compliant and reduces sky glow at 3000K
- + -40°F to 104°F operating range
- + 50,000 hrs rated life

| Order Code | Model # | Watts Selectable | CCT Selectable | Lumens |
|------------|--------------|------------------------|------------------------------|----------------------------|
| 11700 | LWPMWSCCTBZ1 | 15W, 20W, or 25W | 3000K, 4000K, or 5000K | 1800LM 2400LM 3000LM |

Mini Wall Pack

Mini Wall Packs provide exterior wide-flood area illumination for commercial, industrial, and municipal facilities.



VOLTAGE

120/277V

WATTAGE SELECTABLE

15W, 20W, 25W

LUMENS

1800, 2400, 3000

COLOR SELECTABLE

3000K, 4000K, 5000K

FEATURES

- + 3-Stage brightness adjustable
- + 3 CCT color selectable
- + Architectural bronze finish, anti-corrosion spray, cast alloy housing
- + Durable UV-stabilized PC lens resist corrosion and environmental conditions
- + Suited for wall mounting to provide a wide flood area
- + Dusk to dawn sensor is installed
- + IP65 exterior, wet location rated
- + Night sky compliant and reduces sky glow at 3000K
- + Mini Wall Pack with build in emergency back up available
- + Emergency back-up draws 4 watts of power
- + Emergency back-up charges in less than 24 hours
- + Emergency back-up provides 90 minutes of back-up lighting
- + 50,000 hour rated life

| Order Code | Model # | Watts Selectable | CCT Selectable | Lumens |
|------------|--|------------------------|------------------------------|----------------------------|
| 11833 | LWPMWS25CCTBK1EM | 15W, 20W, or 25W | 3000K, 4000K, or 5000K | 2200LM 3000LM 3400LM |
| 11835 | LWPMWS25CCTBK1 *with Emergency Back-up | 15W, 20W, or 25W | 3000K, 4000K, or 5000K | 2200LM 3000LM 3440LM |

LED Yard Light

Yard Lights work from dusk to dawn giving out the perfect night illumination.



2
Colors

VOLTAGE

120/277V

WATTAGE SELECTABLE

36W, 49W, 60W

LUMENS

4500 up to 7500

COLOR SELECTABLE

3000K, 4000K, 5000K



FEATURES

- + 3-Stage brightness adjustable
- + 3 CCT color selectable
- + Available in bronze or gray finish
- + Built with an integrated photocell sensor feature that provides dusk to dawn operation
- + Polyester powder coat finish
- + Suitable for wall or pole mount applications
- + IP65 rated for wet locations, outdoor use
- + -40°F to 104°F operating range

| Order Code | Model # | Color | Watts Selectable | CCT Selectable | Lumens |
|------------|------------|--------|------------------------|------------------------------|----------------------------|
| 11698 | LBWSCCTBZ1 | Bronze | 36W, 48W, or 60W | 3000K, 4000K, or 5000K | 4500LM 6000LM 7500LM |
| 11699 | LBWSCCTWH1 | Gray | 36W, 48W, or 60W | 3000K, 4000K, or 5000K | 4500LM 6000LM 7500LM |

Optional Accessories

Arm Mounts are available



CONTACT US TO LEARN MORE



Toll Free: 866.632.7840



www.earthtronics.com



Email: contact@earthtronics.com

**Scan for Online
Catalog**



For the most up to date specifications,
please visit www.EarthTronics.com.
Specifications are subject to change.

