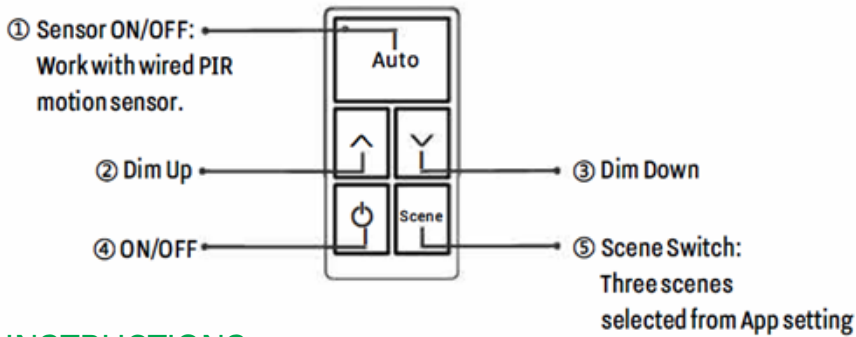


Document	Instructions
Rev. Date	12.4.2023
Order Code	11808
Model #	ECWSBP

Bluetooth® Mesh Wall Switch



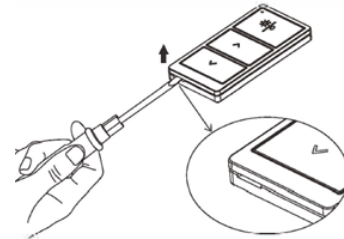
INSTRUCTIONS

- Install 2pcs CR2032 battery by opening the back cover.
- Press button(1) and (2) together over 2 seconds to enter pairing mode or achieve reset function. This switch can be scanned in next 30 seconds.
- In EarthConnect App "Switch" page, click to add the switch.
- Select the light/light group to be controlled by this switch.
- Select 3 scenes to be controlled by this switch.

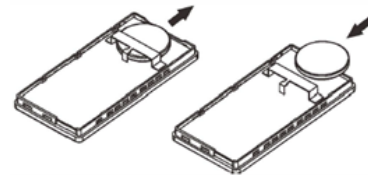
IMPORTANT: Battery model is CS2032.

The battery can be used for 5 years based on the usage of twice a day.

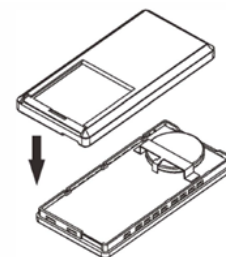
Step 1: Open the cover of the remote control with a flat screw driver.



Step 2: Replace the battery (CS2032) with a new one.



Step 3: Attached the cover.

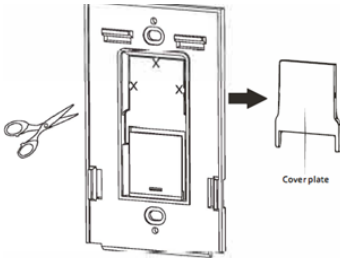


Document	Instructions
Rev. Date	12.4.2023
Order Code	11808
Model #	WP1025

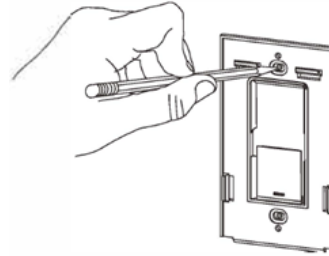
Bluetooth® Mesh Wall Switch

WALL SURFACE INSTRUCTIONS

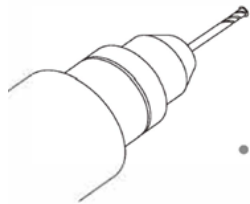
Step 1: Remove the cover plate carefully with scissors.



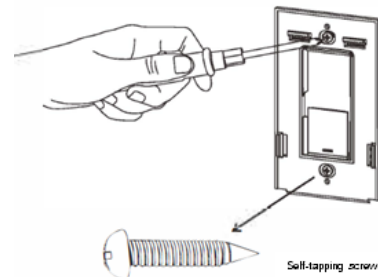
Step 2: Mark the position you want to install.



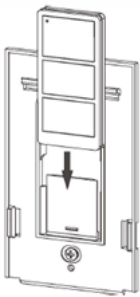
Step 3: Drill two holes with power drill.



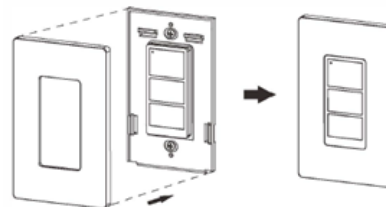
Step 4: Attach the bracket with the supplied self-tapping screws.



Step 5: Slide remote controller into the bracket.



Step 6: Attach the wall plate.



Download the EarthConnect App



Download the app instructions



LEARN MORE: [EarthConnect](https://www.earthtronics.com/earthconnect)

www.earthtronics.com/earthconnect