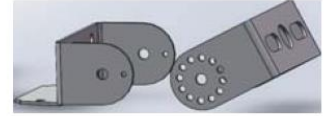
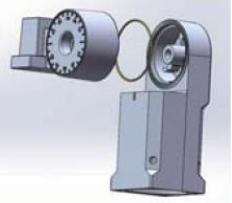


Slip-Fitter  
Order Code: 11087

Straight Mount for Round Pole  
Order Code: 11089

Straight Mount for Square Pole  
Code: 11088

Trunnion  
Order Code: 11090



## Installation

1. Installation angle: 0-90°
2. Max. Pole size: 2 3/8"
3. Each rotation is 4"
4. Max Load Weight: 110lbs

1. Installation: wall mount or Round pole
2. Pole size: 4", 5", 6"
3. Max Load Weight: 110lbs

1. Installation: wall mount or Square pole
2. Min. Pole size: 3" x 3"
3. Max Load Weight: 110lbs

1. Installation angle: 0-180°
2. Max. Pole size: 2 3/8"
3. Each rotation is 30°
4. Max Load Weight: 110lbs

## Dimensions

