

Project	
Date	
Prepared By	
Model #	LDFP1X4WSCCTD5

Specifications

ELECTRICAL

Watts: 20/30/40W **Voltage:**

120-347VAC **Power Factor:**

>0.9 **Operating**

Temp.Range: -40°C (-40°F)

- 40°C (104°F)

LIGHT

Lumens:

2500/3750/5000LM

Color Temperature:

3500K, 4000K, 5000K

CRI: ≥80

Driver: 0-10V

Dimming: 0-10V dimming
function

AGENCY APPROVALS

ETL/FCC: Yes

DLC® Premium: Yes

PRODUCT DETAILS

Rated Life: 50,000 hrs. **Warranty:**

5 years **Weight:** 8.29 LBS

Dimensions:

47.72" Lx11.85" Wx1.17" D

Back Light LED Panel 1x4

Color & Wattage Selectable, 120-347V



120-347V



Color
Selectable

ORDER CODE: 12040

MODEL NUMBER:

LDFP1X4WSCCTD5

COLOR SELECTABLE:

3500K, 4000K, 5000K

WATTAGE: 20W/30W/40W

LUMEN LEVEL:

2500LM/3750LM/5000LM

DLC PRODUCT ID:

S-54L021

Low Bay DLC: S-MRVMRQ

PRODUCT DESCRIPTION

The EarthTronics 1x4 LED Backlit Panel is designed for offices, schools, healthcare facilities, retail stores, and supermarkets, delivering uniform, glare-free illumination with high luminous efficacy to reduce energy costs. Built with durable materials for excellent heat dissipation and minimal light degradation, it offers a long 50,000-hour rated life and features a high-efficiency driver (≥86%) with PF>0.9 for reliable performance. The panel includes 0-10V dimming for smooth brightness control, dustproof construction to prevent yellowing, and selectable color temperatures of 3500K, 4000K, and 5000K for versatile applications. With power-adjustable options and a modern backlit design, this panel combines energy savings, durability, and professional aesthetics for commercial lighting needs.

PRODUCT FEATURES

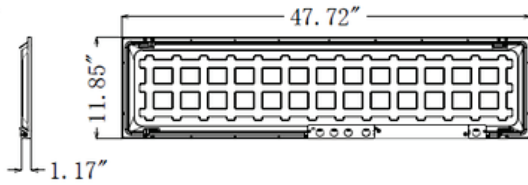
- + Uniform, glare-free illumination with high luminous efficacy for energy savings
- + Long 50,000-hour rated life with minimal light degradation
- + High-efficiency driver (≥86%) with PF >0.9 for reliable performance
- + 0-10V dimming capability for smooth brightness control
- + Durable construction with excellent heat dissipation
- + Dustproof design with no yellowing of the light-guided plate
- + Selectable color temperatures: 3500K, 4000K, 5000K
- + Power-adjustable range for flexible energy use
- + Sleek backlit design for a modern, professional appearance

APPLICATIONS

- + Offices
- + Schools
- + Healthcare Facilities
- + Commercial Applications

Please consult installation instructions for proper application and use of this fixture.

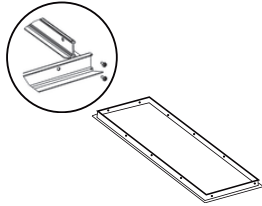
PRODUCT DIMENSIONS



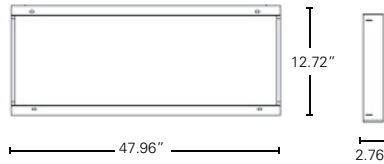
PACKAGE DETAILS

Dimensions:
49.09" L x 5.40" W x 25.39" H
Weight: 33.16 LBS
Carton Weight: 38.18
Carton Quantity: 4
UPC: 840791120408
Master UPC: 84079112040800

OPTIONAL ACCESSORIES



Recessed Drywall Kit
Order Code: 11103



Surface Mount Kit
Order Code: 11531



External Emergency Backup Unit
Order Code: 11469



EarthConnect
Bluetooth® Mesh Fixture Controller
Order Code: 11799



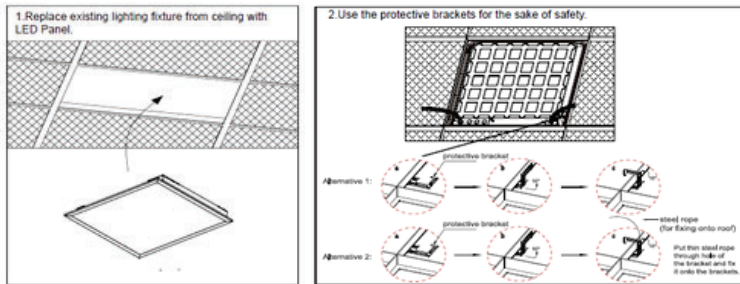
EarthConnect
Non-Bluetooth® Mesh Fixture Controller
Order Code: 11800



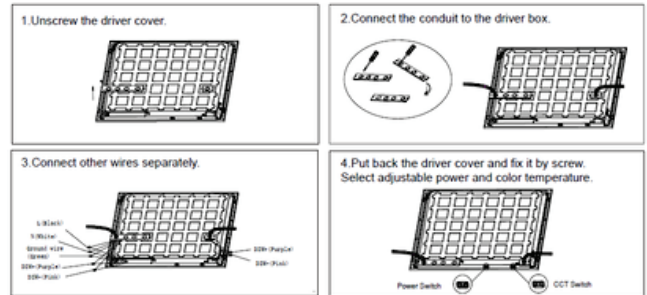
EarthConnect
Bluetooth® Mesh PIR Sensor
12V DC
Order Code: 11801

INSTALLATION INSTRUCTIONS

RECESSED INSTALL



INSTALL GUIDE



SUSPENSION KIT INSTALL

