

Project	
Date	
Prepared By	
Model #	AL300WSCCTBK5

Specifications

ELECTRICAL:

Watts: 200W/240W/300W
 Voltage: 120/277VAC, 347VAC
 Power Factor: 0.942
 THD: 15.1%
 Operating Temp. Range:
 -40°C (-4°F) to 45°C (113°F)

LIGHT:

Lumens: 26000, 31200,
 39000
 Lumen Per Watt (LPW): 130
 Color Temperature: 3000K,
 4000K, 5000K
 CRI: 73

Dimming: 0-10VDC
 Dim Capability & Range:
 Continuous down to 10%

AGENCY APPROVALS:

DLC® Premium: Yes
 UL/cUL: Yes
 RoHS: Yes
 IP65: Yes

PRODUCT DETAILS

Housing: Die-cast
 aluminum alloy
 Warranty: 5 years
 Weight: 10.75lbs
 Dimensions: 22.7"(H) x
 13.3"(L) x 2.8"(D)

LED Area Light

Color & Wattage Selectable 120/277VAC, 347VAC



ORDER CODE: 11766
MODEL NUMBER:
 AL300WSCCTBK5
COLOR TEMPERATURE:
 3000K, 4000K, 5000K
**WATTAGE
 SELECTABLE**
 200W/240W/300W
DLC® PRODUCT ID:
 S-FS36ZA

PRODUCT DESCRIPTION

EarthTronics color and wattage selectable LED Area Lights low profile design that provides the flexibility to insure the correct light level and color temperature desired in different applications. Select from 3000K, 4000K or 5000K color temperatures as well as 26000, 31200 or 39000 lumen levels. LED Area Lights are ideal for exterior illumination for commercial, industrial, and municipal facilities. The durable die cast aluminum housing is powder coated to maintain the fixture appearance for several years. The area light provides more than 130 lumens per watt efficient performance. A dusk to dawn sensor is available and is easily added at the time of installation. The design is built to withstand all climates and allows for an extreme temperature range, even operating down to -40 degrees C°, and is IP65 wet location rated. The unique changeable mount system includes the following options: slip fitter with adjustable angle, straight mounts for poles and wall applications and a trunion (yoke) mount. DLC® Premium listed.

PRODUCT FEATURES

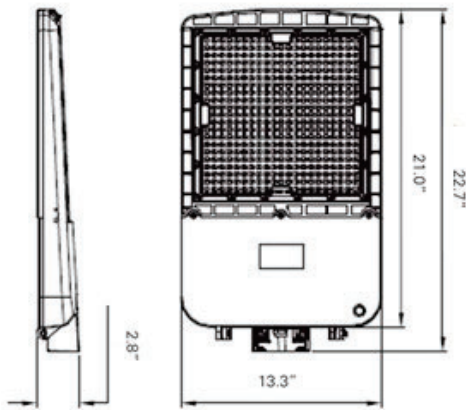
- + Color Selectable: 3000K, 4000K, 5000K
- + Lumen Selectable: 26000, 31200, or 39000
- + Provides more than 130 lumens per watt
- + Die-cast aluminum alloy housing provides long life in commercial installations
- + Standard 6KV surge protector included (10KV optional upgrade available)
- + Driver standard with 0-10V dimming (prewired)
- + Corrosion resistant finish & screws
- + UV resistant powder coat finish
- + IP65 wet location rated
- + DLC® 5.1 Technical Requirement
- + Compatible with EarthConnect, Networked Lighting Controls

APPLICATIONS

- + Parking Lots
- + Area Lighting
- + Walkways
- + Campuses
- + Grocery Stores
- + Commercial

Please consult installation instructions for proper application and use of this fixture.

PRODUCT DIMENSIONS



PACKAGE DETAILS

Individual Package: 1

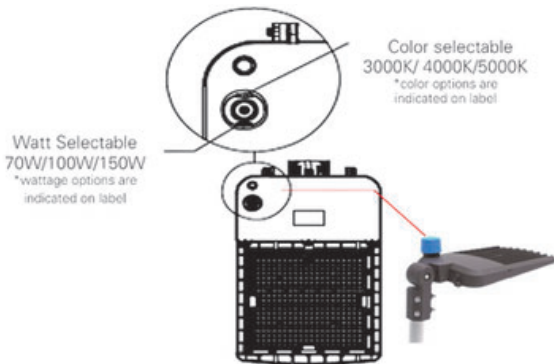
Fixture Dimensions: 24.92" L x 15.28" W x 5.04" H

Weight: 13.0 LBS

UPC: 840791117668

Note: Mounting system ordered separately

COLOR & WATTAGE SELECTABLE



1. Take off the waterproof rubber cover from the wattage-box
2. Select the wattage using the slide switch. The watt options are indicated on the label.
3. Select the color temperature using the slide switch. The color options are indicated on the label.
4. Put back the waterproof rubber cover.

OPTIONAL ACCESSORIES



Slip-Fitter
Order Code: 11767



Trunnion Mount
Order Code: 11769



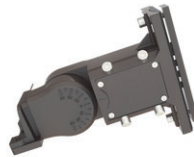
Yoke Mount
Order Code: 11771



Photocell Kit
Order Code: 11086
for 120/277V use only



Type 5 Lens
Order Code: 11773



Arm Mount
Order Code: 11962

NOT PICTURED:

10KV Surge Protector Order Code: 11774



**Bluetooth® Mesh PIR
Outdoor Sensor**
Area Light Extended - Range
Sensor
(sold separately) Order Code: 11963

EarthConnect, Bluetooth® networked lighting control system makes it easy to maximize energy savings, achieve code compliance for indoor applications. It's simple and intuitive. Using the EarthConnect app, nodes can be commissioned without the need for a gateway or Internet access.

For more information visit:

<https://www.earthtronics.com/product/earthconnect.com>

