

Project	
Date	
Prepared By	
Model #	AL150WSCCTBK5

## Specifications

### ELECTRICAL

**Watts:** 70/100/150W  
**Voltage:**  
 120/277VAC, 347VAC  
**Power Factor:** 0.942  
**THD:** 15.1%  
**Operating Temp. Range:**  
 -40°C (-4°F) to 45°C (113°F)  
**Dimming:** 0-10VDC Dim  
**Capability & Range:**  
 Continuous down to 10%

### LIGHT

**Initial Lumens:** 19500  
**Lumens per Watt:** 130  
**Color Temperature:**  
 3000K, 4000K, 5000K  
**CRI:** 73

### AGENCY APPROVALS

**UL/cUL:** Yes  
**RoHS:** Yes  
**IP65:** Yes  
**DLC® Premium:** Yes

### PRODUCT DETAILS

**Housing:**  
 Die-cast aluminum alloy  
**Warranty:** 5 years  
**Weight:** 8.50 LBS

# LED Area Light

Color & Wattage Selectable 120/277VAC, 347VAC



**ORDER CODE:** 11765  
**MODEL NUMBER:**  
 AL150WSCCTBK5  
**COLOR TEMPERATURE:**  
 3000K, 4000K, 5000K  
**WATTAGE  
 SELECTABLE:**  
 70/100/150W  
**DLC® PRODUCT ID:**  
 S-FS36ZA

## PRODUCT DESCRIPTION

EarthTronics color and wattage selectable LED Area Lights low profile design that provides the flexibility to insure the correct light level and color temperature desired in different applications. Select from 3000K, 4000K or 5000K color temperatures as well as 9100, 13000 or 19500 lumen levels. LED Area Lights are ideal for exterior illumination for commercial, industrial, and municipal facilities. The durable die cast aluminum housing is powder coated to maintain the fixture appearance for several years. The area light provides more than 130 lumens per watt efficient performance. A dusk to dawn sensor is available and is easily added at the time of installation. The design is built to withstand all climates and allows for an extreme temperature range, even operating down to -40 degrees C°, and is IP65 wet location rated. The unique changeable mount system includes the following options: slip fitter with adjustable angle, straight mounts for poles and wall applications and a trunion (yoke) mount. DLC® Premium listed.

## PRODUCT FEATURES

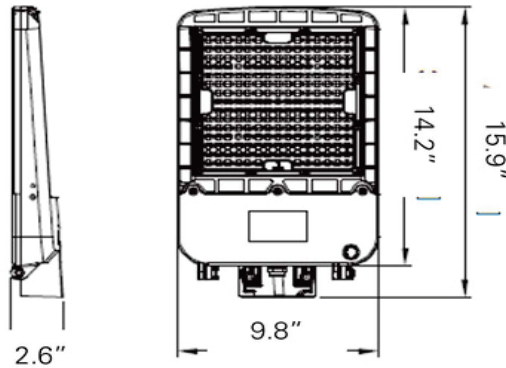
- + Color Selectable: 3000K, 4000K, 5000K
- + Lumen Selectable: 9100, 13000 or 19500
- + UV resistant powder coat finish
- + Provides more than 130 lumens per watt
- + IP65 wet location rated
- + Die-cast aluminum alloy housing provides long life in commercial installations
- + DLC® 5.1 Technical Requirement
- + Standard 6KV surge protector included (10KV optional upgrade available)
- + Driver standard with 0-10V dimming
- + Corrosion resistant finish & screws
- + Compatible with EarthConnect, Networked Lighting Controls

## APPLICATIONS

- + Parking Lots
- + Area Lighting
- + Walkways
- + Campuses
- + Grocery Stores
- + Commercial

Please consult installation instructions for proper application and use of this fixture.

## PRODUCT DIMENSIONS

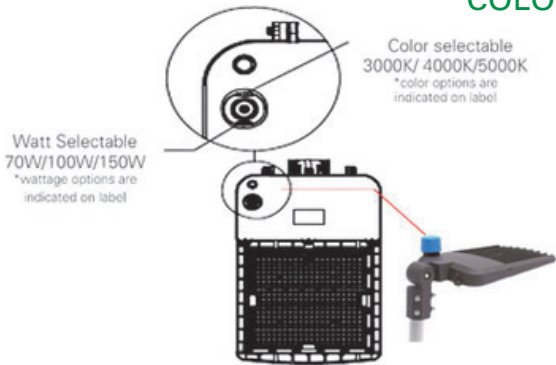


## PACKAGE DETAILS

Individual Package: 1  
 Fixture Dimensions: 17.99" x 11.81" x 4.72"  
 Weight: 8.50 LBS  
 UPC: 840791117651

*Note: Mounting system ordered separately*

## COLOR & WATTAGE SELECTABLE



1. Take off the waterproof rubber cover from the wattage-box
2. Select the wattage using the slide switch. The watt options are indicated on the label.
3. Select the color temperature using the slide switch. The color options are indicated on the label.
4. Put back the waterproof rubber cover.

## OPTIONAL ACCESSORIES



**Slip-Fitter**  
Order Code: 11767



**Trunnion Mount**  
Order Code: 11769



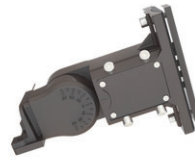
**Yoke Mount**  
Order Code: 11770



**Photocell Kit**  
Order Code: 11086  
for 120/277V use only



**Type 5 Lens**  
Order Code: 11773



**Arm Mount**  
Order Code: 11962

**NOT PICTURED:**

10KV Surge Protector Order Code: 11774



**Bluetooth® Mesh PIR  
Outdoor Sensor**  
Area Light Extended - Range  
Sensor  
*(sold separately)* Order Code: 11963

EarthConnect, Bluetooth® networked lighting control system makes it easy to maximize energy savings, achieve code compliance for indoor applications. It's simple and intuitive. Using the EarthConnect app, nodes can be commissioned without the need for a gateway or Internet access.

For more information visit:

<https://www.earthtronics.com/product/earthconnect.com>

