

# LED BRT

## Adjustable LED Downlight Trim Bulb 6" – 13 Watt LED 5000K



### PRODUCT DESCRIPTION

EarthTronics Adjustable LED Trim Kit provides a simple and quick way to upgrade recessed downlight fixtures. It's as simple as screwing in a light bulb. The screw base neck is depth adjustable to reach the fixture socket to make the power connection and fit against the ceiling. In addition the trim ring is replaceable and can be exchanged with other optional color and finish trim rings. This LED trim kit provides 5000K pleasing daylight with exceptional 90CRI. Perfect for residential use in kitchens and family rooms. Commercial applications include hospitality, long term care facilities and any downlight fixture that would benefit from an upgrade. Easily replace up to 80 watt BR30 flood lamps with this dimmable 13 watt LED trim kit for 80% energy savings. Features a long 25,000 hour rated life.

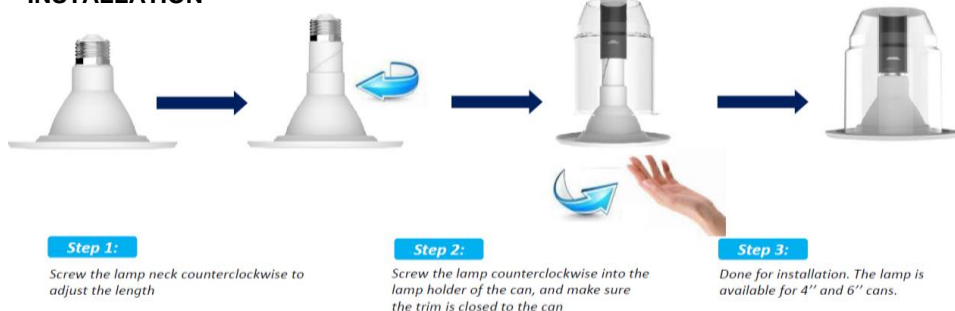
### PRODUCT FEATURES

- 800 lumens daylight 5000K with exceptional 90 CRI color rendering
- 90° beam angle provides a full flood light
- Smooth dimming to less than 5%
- The kit easily converts 5" to 6" aperture fixtures with a stylish new trim

### PRODUCT APPLICATIONS



### INSTALLATION



### WORLD-CLASS LED CHIP

### COLORED TRIM

### HEATSINK

### FLEXIBLE LAMP NECK

Screw the lamp neck counterclockwise to adjust the length

### STANDARD MEDIUM BASE Easy for installation

**MODEL NUMBER: LRTA61350D**  
**ORDER CODE: 10602**

Order Code	Pack Size	Individual UPC	Master Park UPC	Qty
10602	1	840791106020	84079110602000	10
Dimensions (inches - Length x Width x Height)				
10602	1	8.09 x 4.67 x 8.09	16.89 x 14.72 x 9.17	10
Weight (lbs)				
10602	1	.74	7.56	10

Electrical	
Watt	13
Power Factor	> 0.90
Voltage	120 volt
Frequency	60hz
Min. Start Temp	-4F
Max. Operating Temp	104F
Base Type	E26 Medium
Light	
Initial Lumens	800
Lumens per Watt	62
Color Temperature	5000K
Color Rendering (CRI)	90
Beam Angle	90°
Agency Approvals	
UL	Yes
Energy Star	25,000 hr rated
RoHS	Yes
FCC	Yes
Product Details	
Warranty	5 years 6 hrs/day
Trim Diameter	7.375"
Fixture Nominal Diameter	4.875" to 6.69"